

TECHNICAL MANUAL

ORGANIZATIONAL DIRECT SUPPORT, AND GENERAL SUPPORT MAINTENANCE
REPAIR PARTS AND SPECIAL TOOLS LISTS
(INCLUDING DEPOT MAINTENANCE REPAIR PARTS AND SPECIAL TOOLS)
F O R
GENERATOR, SIGNAL SWEEP AN/USM-203
(NSN 6625-00-935-0145)

HEADQUARTERS, DEPARTMENT OF THE ARMY

JANUARY 1977

TECHNICAL MANUAL }
 NO. 11-6625-1559-24P }

HEADQUARTERS
 DEPARTMENT OF THE ARMY
 WASHINGTON, DC, 17 January 1977

ORGANIZATIONAL, DIRECT SUPPORT, AND GENERAL SUPPORT MAINTENANCE
 REPAIR PARTS AND SPECIAL TOOLS LIST
 (INCLUDING DEPOT MAINTENANCE REPAIR PARTS AND SPECIAL TOOLS)
 FOR

GENERATOR, SIGNAL SWEEP AN/USM-203
 (NSN) 6625-00-935-0145)

Current as of 12 October 1976

REPORTING OF ERRORS

You can improve this manual by recommending improvements using DA Form 2028-2 (Test) located in the back of the manual. Simply tear out the self-addressed form, fill it out as shown on the sample, fold it where shown, and drop it in the mail.

If there are no blank DA Form 2028-2 (Test) in the back of your manual, use the standard DA Form 2028 (Recommended Changes to Publications and Blank Forms) and forward to the Commander, US Army Electronics Command, ATT: DRSEL-MA-Q, Fort Monmouth, New Jersey 07703.

In either case a reply will be furnished direct to you.

Table of Contents

	Page	Illus Figure
SECTION I. Introduction	1	
II. Repair parts list	5	
Group 00 Generator, Sweep Signal AN/USM-203	5	1
01 Generator, Sweep Signal SG-593/U	7	2
0101 ALC blanking and meter circuit	9	3
0102 Amplifier and preamplifier	11	4
0103 Main chassis	15	5,6
0104 UHF-ALC detector	21	7
0105 Radio Frequency Detector RF-231/U	23	8
0106 Generator, harmonic marker	27	9
0107 Mixer stage, frequency	31	10,11
0108 Oscillator fixed	35	12
0109 Sweep oscillator	37	13-17
0110 Panel assembly, front	49	18,19
SECTION III. Special tools list (Not applicable)		
IV. National stock number and part number index	52	

*This manual supersedes TM 11-6625-1559-45P, 28 January 1971; and so much of TM 11-6625-1559-12, 10 January 1969, including Change 1, 15 October 1969, as pertains to repair parts and special tools list.

SECTION I INTRODUCTION

1. Scope

This manual lists repair parts and special tools required for performance of organizational, direct support, and general support maintenance of the AN/USM-203.

2. General

This Repair Parts and Special Tools List is divided into the following section:

a. Section II. Repair Parts List. A list of repair parts authorized for use in the performance of maintenance. The list also includes parts which must be removed for replacement of the authorized parts. Parts lists are composed of functional groups in ascending numerical sequence, with the parts in each group listed in figure and item number sequence.

b. Section III. Special Tools List. Not applicable.

c. Section IV. National Stock Number and Part Number Index. A list, in ascending National item identification number (NIIN, last 9 digits) sequence, of all National stock numbers appearing in the listings, followed by a list, in alphameric sequence, of all part numbers appearing in the listings. National stock number and part numbers are cross-referenced to each illustration figure and item number appearance.

3. Explanation of Columns

The following provides an explanation of columns found in the tabular listings

a. Illustration. This column is divided as follows:

(1) *Figure number.* Indicates the figure number of the illustration in which the item is shown.

(2) *Item number.* The number used to identify each item called out in the illustration.

b. Source, Maintenance, and Recoverability Codes (SMR).

(1) *Source code.* Source codes are assigned to support items to indicate the manner of acquiring support items for maintenance, repair, or overhaul of end items. Source codes are entered in the first and second positions of the Uniform SMR Code format as follows

Definition

PA - Item procured and stocked for anticipated or known usage.

XD - A support item that is not stocked. When required, item will be procured through normal supply channels.

NOTE

Cannibalization or salvage maybe used as a source of supply for any items source coded

above except those coded XA, XD, and aircraft support items as restricted by AR 700-42.

(2) *Maintenance code.* Maintenance codes are assigned to indicate the levels of maintenance authorized to USE and REPAIR support items. The maintenance codes are entered in the third and fourth positions of the Uniform SMR Code format as follows:

(a) The maintenance code entered in the third position will indicate the lowest maintenance level authorized to remove, replace, and use the support item. The maintenance code entered in the third position will indicate one of the following levels of maintenance:

<i>Code</i>	<i>Application/Explanation</i>
O -	Support item is removed, replaced, used at the organizational level.
H -	Support item is removed, replaced, used at the general support level.

(b) The maintenance code entered in the fourth position indicates whether the item is to be repaired and identifies the lowest maintenance level with the capability to perform complete repair (i.e., all authorized maintenance functions). This position will contain one of the following maintenance codes:

<i>Code</i>	<i>Application/Explanation</i>
H -	The lowest maintenance level capable of complete repair of the support item is the general support level.
Z -	Nonreparable. No repair is authorized.

(3) *Recoverability code.* Recoverability codes are assigned to support items to indicate the disposition action on unserviceable items. The recoverability code is entered in the fifth position of the Uniform SMR Code format as follows:

<i>Recoverability codes</i>	<i>Definition</i>
Z -	Nonreparable item. When unserviceable, condemn and dispose at the level indicated in position 3.
H -	Reparable item. When uneconomically repairable, condemn and dispose at the general support level.

c. National Stock Number. Indicates the National stock number assigned to the item and will be used for requisitioning purposes.

d. Part Number. Indicates the primary number used by the manufacturer (individual, company, firm, corporation, or Government activity), which controls the design and characteristics of the item by means of its engineering drawings, specifications standards, and

inspection requirements, to identify an item or range of items.

NOTE

When a stock numbered item is requisitioned, the repair part received may have a different part number than the part being replaced.

e. Federal Supply Code for Manufacturer (FSCM). The FSCM is a 5-digit numeric code listed in SB 708-42 which is used to identify the manufacturer, distributor, or Government agency, etc.

f. Description. Indicates the Federal item name and, if required, a minimum description to identify the item.

g. Unit of Measure (U/M). Indicates the standard of the basic quantity of the listed item as used in performing the actual maintenance function. This measure is expressed by a two-character alphabetical abbreviation (e.g., ea, in, pr, etc.). When the unit of measure differs from the unit of issue, the lowest unit of issue that will satisfy the required unite of measure will be requisitioned.

h. Quantity Incorporated in Unit. Indicates the quantity of the item used in the breakout shown on the illustration figure, which is prepared for a functional group, subfunctional group, or an assembly.

4. Special Information

The following publications pertain to the AN/USM-203 and its components:

TM 11-6625-1559-12, Generator, Signal Sweep AN/USM-203

TM 11-6625-1559-45/1, Generator, Signal Sweep

AN/USM-203

TM 11-6625-1559-45/2, Generator, Signal Sweep AN/USM-203

5. How to Locate Repair Parts

a. When National stock number or part number is unknown.

(1) *First.* Using the table of contents, determine the functional group within which the repair part belongs. This is necessary since illustrations are prepared for functional groups and listings are divided into the same groups.

(2) *Second.* Find the illustration covering the functional group to which the repair part belongs.

(3) *Third.* Identify the repair part on the illustration and note the illustration figure and item number of the repair part.

(4) *Fourth.* Using the Repair Parts Listing, find the figure and item number noted on the illustration.

b. When National stock number or part number is known.

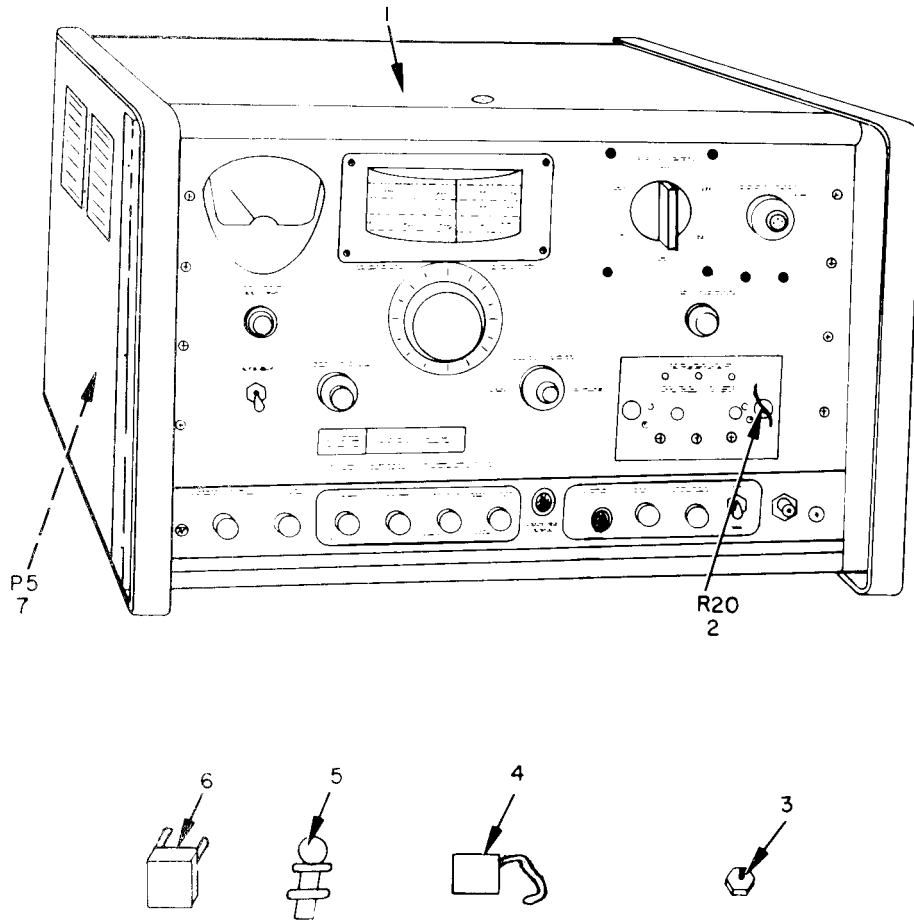
(1) *First.* Using the Index of National Stock Numbers and Part Numbers, find the pertinent National stock number or part number. This index is in ascending NIIN sequence followed by a list of part numbers in ascending alphameric sequence, cross-referenced to the illustration figure number and item number.

(2) *Second.* After finding the figure and item number, locate the figure and item number in the repair parts list.

6. Abbreviations

Not applicable.

(Next printed page is 4)



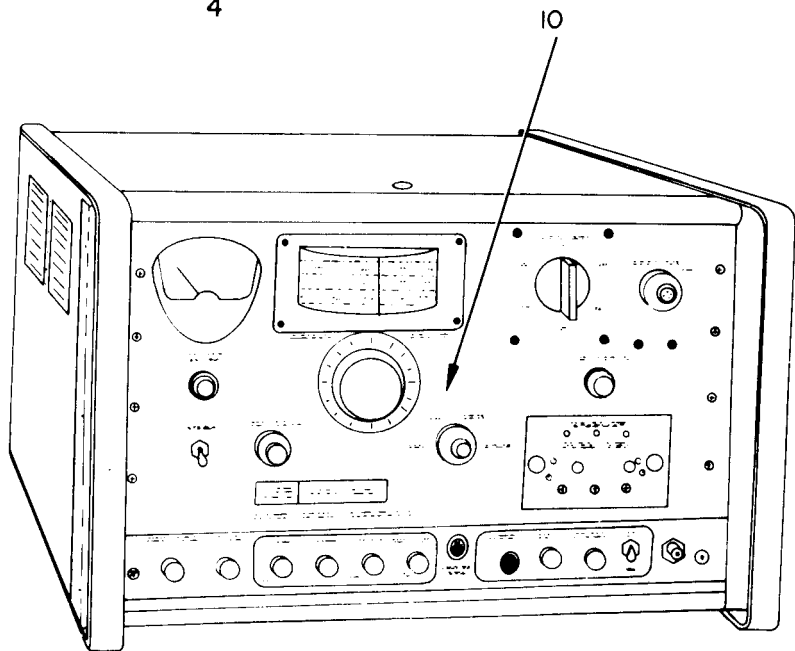
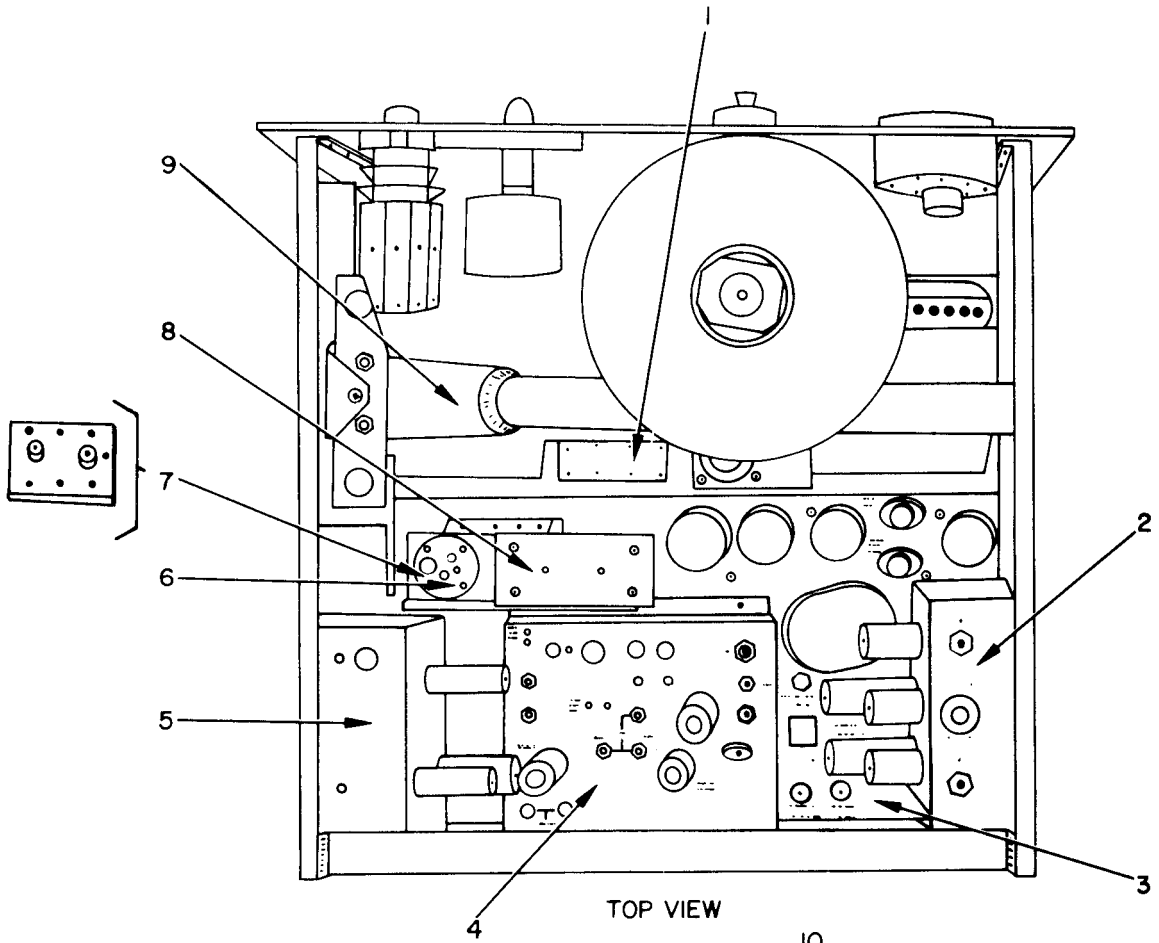
ELIGKOOI

Figure 1. Generator, Sweep Signal AN/USM-203.

SECTION II

TM11-6625-1559-24P

(1) LIST (a) FIG NO.	(2) FUNCTION (b) ITEM NO.	(3) SMR CODE	(4) NATIONAL STOCK NUMBER	(5) PART NUMBER	(6) DESCRIPTION USABLE ON CODE	(7) QTY INC IN UNIT
					GROUP 00 GENERATOR, SWEEP SIGNAL AN/USM-203	
1	1	PAHHH	6625-00-935-8109	SG593/U	30058 GENERATOR,SWEEP	A 1
1	2	PAHZZ	5905-00-114-5438	RC20GF510J	31349 RESISTOR,FIXED,COMPOSITION	A 1
1	3	PAHZZ	5935-00-149-4066	JG88U	30058 CONNECTOR,PLUG,ELECTRICAL	A 1
1	4	PAHZZ	5935-00-838-5183	T240	32879 ADAPTER,CONNECTOR	A 1
1	5	PAHZZ	6625-00-070-7998	DA-505/U	30058 DUMMY LOAD, ELECTRICAL	A 1
1	6	PAHZZ	5935-00-072-7157	822-052	31113 PLUG ASSEMBLY,SHORTING	A 1
1	7	XDHZZ	5935-00-173-7277	UG-1640/U	71785 CONNECTOR,PLUG,ELECTRICAL	A 1
					5	



FRONT VIEW

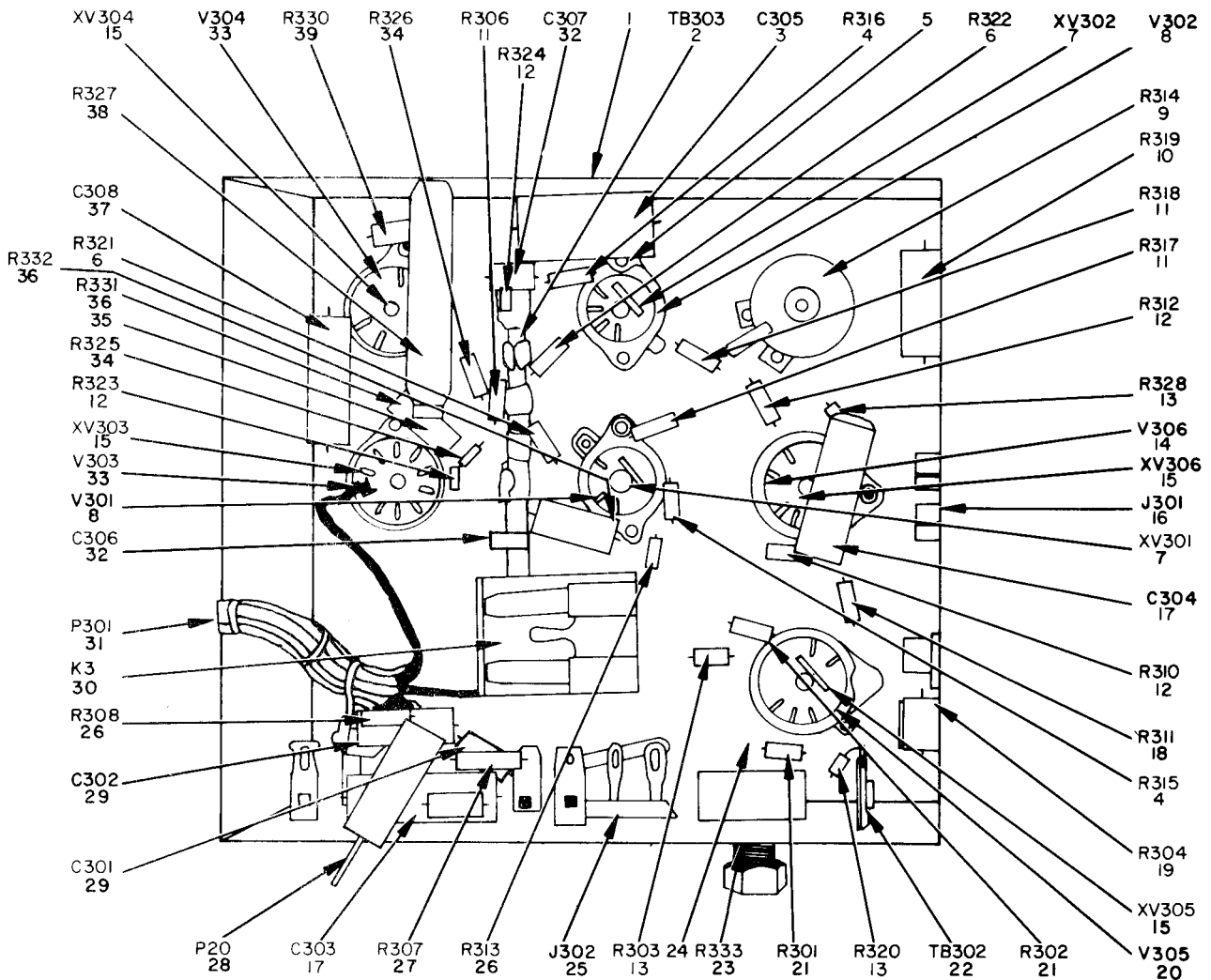
ELIGK002

Figure 2. Generator, Sweep Signal SG-593/U.

SECTION II

TM11-6625-1559-24P

(1) ILLUSTRATION		(2)	(3)	(4)	(5)	(6)	(7)	(8)
(a) FIG NO.	(b) ITEM NO.	SMR CODE	NATIONAL STOCK NUMBER	PART NUMBER	FSCM	DESCRIPTION <i>USABLE ON CODE</i>	U/M	QTY INC IN UNIT
						GROUP 01 GENERATOR, SWEEP SIGNAL SG-593/U		
2	1	PAHHH	6625-00-401-9684	822-137	01113	OSCILLATOR, FIXED	EA	1
2	2	XDHXX	6625-00-401-9680	822-140	01113	ALC, BLANKING, AND METER, CIRCUIT	EA	1
2	3	XDHXX		822-139	01113	CHASSIS, MAIN	EA	1
2	4	PAHHH	6625-00-401-9682	822-136	01113	GENERATOR, HARMONIC MARKER	EA	1
2	5	PAHHH	6625-00-401-9686	822-133	01113	AMPLIFIER, PREAMPLIFIER AND BIRDY	EA	1
2	6	PAHHH	5820-00-935-8114	RF231U	80058	DETECTOR, RADIO, FREQUENCY	EA	1
2	7	PAHHH	6625-00-401-9681	822-134	01113	DETECTOR, AUTO LEVEL CONTROLLER UHF	EA	1
2	8	PAHHH	6625-00-179-8678	822-131	01113	MIXER STAGE, FREQUENCY	EA	1
2	9	PAHHH	6625-00-401-9685	815-124	01113	OSCILLATOR, SWEEP	EA	1
2	10	XDHXX		822-128	01113	PANEL ASSEMBLY, FRONT	EA	1



ELIGK003

Figure 3. ALC Blanking and Meter Circuit.

SECTION II

TM11-6625-1559-24P

(1)	(2)	(3)	(4)	(5)	(6)	(7)	(8)
ILLUSTRATION		NATIONAL STOCK NUMBER	PART NUMBER	FSCM	DESCRIPTION	USABLE ON CODE	QTY INC IN UNIT
(a)	(b) TEM NO.	SMR CODE					/M
					GROUP 0101 ALC BLANKING AND METER CIRCUIT		
3	1	XDHZZ	810-660	01113	METALWORK , ASSEMBLY		EA 1
3	2	XDHZZ	7H5AH	97913	TERMINAL BOARD		EA 1
3	3	PAHZZ	5910-00-899-3797	P82922N13	00658	CAPACITOR, FIXED, METAL , PAPER	EA 1
3	4	PAHZZ	5905-00-110-0196	RC20GF102K	81349	RESISTOR, FIXED, COMPOSITION	EA 2
3	5	XDHZZ		101B	02820	BASE , TUBE, LOCK	EA 2
3	6	PAHZZ	5905-00-279-2514	RC20GF564J	81349	RESISTOR, FIXED, COMPOSITION	EA 2
3	7	PAHZZ	5935-00-944-1009	04-703-02	91662	SOCKET, ELECTRON , TUBE	EA 2
3	8	PAOZZ	5960-00-996-7077	6AU6	80131	ELECTRON TUBE	EA 2
3	9	XDHZZ		118-083	01113	RESISTOR, VARIABLE	EA 1
3	10	PAHZZ	5905-00-050-3913	118-090	01113	RESISTOR, VARIABLE	EA 1
3	11	PAHZZ	5905-00-192-0660	RC20GF184J	81349	RESISTOR , FIXED ,COMPOSITION	EA 3
3	12	PAHZZ	5905-00-279-1884	RC20GF335K	81349	RESISTOR, FIXED, COMPOSITION	EA 4
3	13	PAHZZ	5905-00-192-9260	RC20GF154K	81349	RESISTOR, FIXED, COMPOSITION	EA 3
3	14	PAOZZ	5960-00-615-5584	12AT7	80131	ELECTRON , TUBE	EA 1
3	15	PAHZZ	5935-00-490-8259	181-271	01113	SOCKET , ELECTRON ,TUBE	EA 4
3	16	XDHZZ		F126	71785	CONNECTOR , RECEPTACLE , ELECTRICAL	EA 1
3	17	PAHZZ	5910-00-847-5583	160P47304	56289	CAPACITOR, FIXED, PAPER, DIELECTRIC	EA 2
3	18	PAHZZ	5905-00-185-6946	RC20GF474K	81349	RESISTOR, FIXED, COMPOSITION	EA 1
3	19	XDHZZ		118-087	01113	RESISTOR, VARIABLE	EA 1
3	20	PAOZZ	5960-00-681-9596	6922	80131	ELECTRON TUBE	EA 1
3	21	PAHZZ	5905-00-171-2005	RC20GF471K	81349	RESISTOR, FIXED, COMPOSITION	EA 2
3	22	XDHZZ	5940-00-329-5409	3AUA	97913	TERMINAL BOARD	EA 1
3	23	PAHZZ	5905-00-432-0133	BA811-1533	71590	RESISTOR ,VARIABLE	EA 1
3	24	XDHZZ		211-163	01113	CHASSIS , ELECTRICAL, EQUIPMENT	EA 1
3	25	XDHZZ		2675	71785	CONNECTOR ,RECEPTACLE , ELECTRICAL	EA 1
3	26	PAHZZ	5905-00-192-3987	RC20GF104K	81349	RESISTOR, FIXED, COMPOSITION	EA 2
3	27	PAHZZ	5905-00-114-5428	RC20GF394K	81349	RESISTOR ,FIXED ,COMPOSITION	EA 1
3	28	XDHZZ	5935-00-257-7185	203	83330	PLUG, TIP	EA 1
3	29	PAHZZ	5910-00-806-6418	PM4S1	14655	CAPACITOR, FIXED , PAPER	EA 2
3	30	XDHZZ		GA11D	77342	RELAY, ARMATURE	EA 1
3	31	XDHZZ		13219	71785	CONNECTOR, PLUG ,ELECTRICAL	EA 1
3	32	XDHZZ		331-0000H0759D	72982	CAPACITOR, FIXED, CERAMIC	EA 2
3	33	PAOZZ	5960-00-087-3086	6CW5	80131	ELECTRON , TUBE	EA 2
3	34	PAHZZ	5905-00-279-1754	RC20GF155J	81349	RESISTOR, FIXED , COMPOSITION	EA 2
3	35	XDHZZ		102B	02820	BASE, TUBE LOCK	EA 4
3	36	PAHZZ	5905-00-279-2529	RC42GF222K	81349	RESISTOR, FIXED, COMPOSITION	EA 2
3	37	PAHZZ	5910-00-079-5672	4 TMS20	56289	CAPACITOR, FIXED, PAPER	EA 1
3	38	XDHZZ		FRL10-3000	24681	RESISTOR, FIXED, WIRE WOUND	EA 1
3	39	PAHZZ	5905-00-185-8518	RC20GF103K	81349	RESISTOR , F IXED , COMPOSITION	EA 1

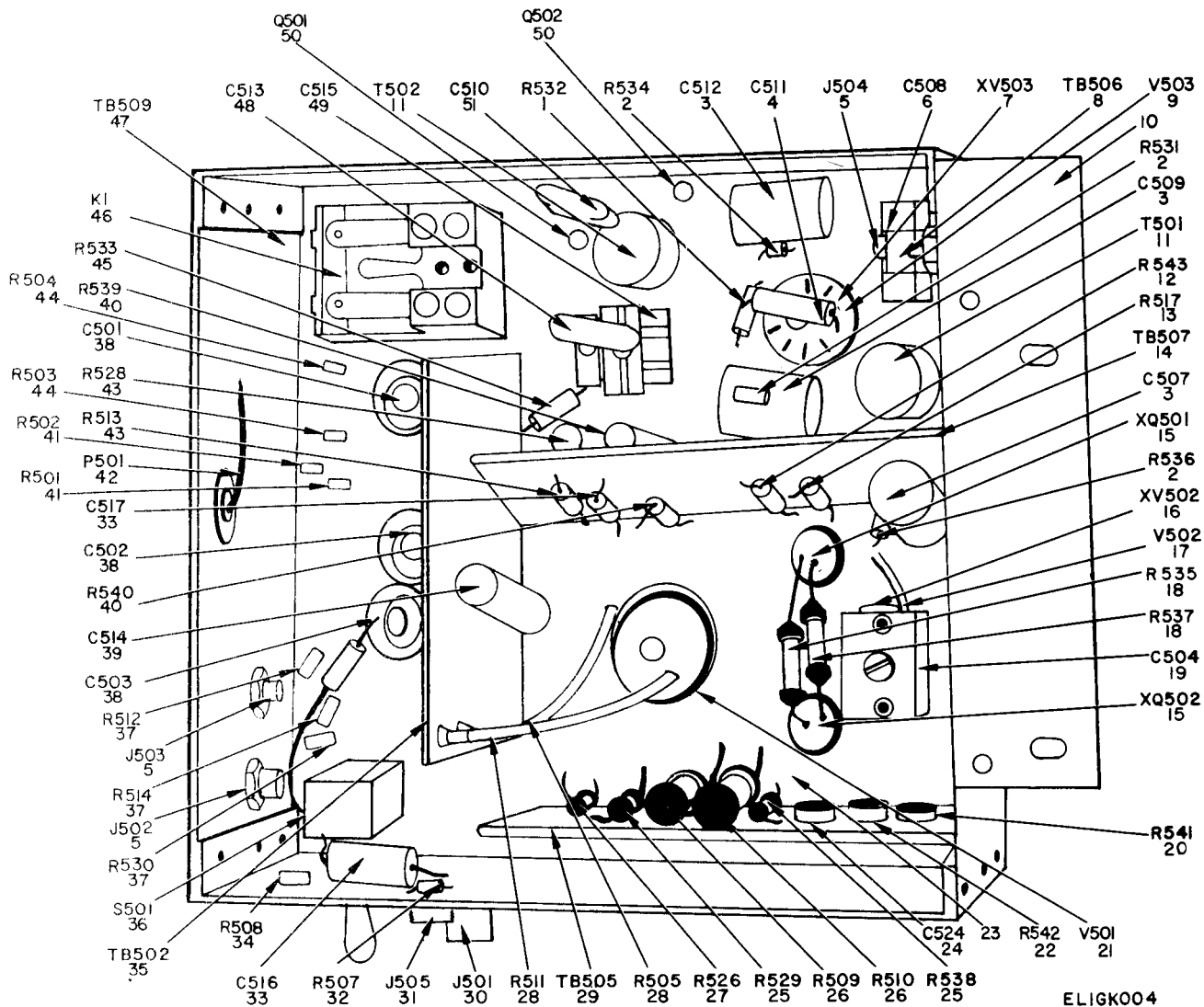


Figure 4. Amplifier and Preamplifier.

SECTION II

TM11-6625-1559-24P

(1) ILLUSTRATION		(2)	(3)	(4)	(5)	(6)	(7)	(8)
(a) FIG NO.	(b) ITEM NO.	SMR CODE	NATIONAL STOCK NUMBER	PART NUMBER	FSCM	DESCRIPTION	USABLE ON CODE	QTY INC IN UNIT
						GROUP 0102 AMPLIFIER AND PREAMPLIFIER		
4	1	PAHZZ	5905-00-195-6761	RC20GF104J	31345	RESISTOR, FIXED, COMPOSITION		1
4	2	PAHZZ	5905-00-195-6806	RC20GF102J	31345	RESISTOR, FIXED, COMPOSITION		3
4	3	PAHZZ	5910-00-879-6957	P82922N11	30656	CAPACITOR, FIXED, PAPER		3
4	4	PAHZZ	5910-00-892-7466	D6-202	71590	CAPACITOR, FIXED, CERAMIC, DIELECTRIC		1
4	5	PAHZZ	5935-00-847-6803	3501FP	32385	JACK, TELEPHONE		3
4	6	PAHZZ	5910-00-556-9437	464	72136	CAPACITOR, VARIABLE, MICA		1
4	7	PAHZZ	5935-00-222-9828	9714	72825	SOCKET, ELECTRON TUBE		1
4	8	XDHZZ		234-158	01115	TERMINAL BOARD ASSEMBLY C		2
4	9	PAOZZ	5960-00-188-0933	12AY7	30131	ELECTRON, TUBE		1
4	0	XDHZZ		1Z	34171	BRACKET, TRIMMER MOUNTING		2
4	1	PAHZZ	5950-00-073-1218	823-021	01115	TRANSFORMER ASSEMBLY		2
4	2	PAHZZ	5905-00-769-7223	RN70D1874F	31345	RESISTOR, FIXED, FILM		1
4	3	PAHZZ	5905-00-279-3495	RC20GF753J	31345	RESISTOR, FIXED, COMPOSITION		1
4	4	XDHZZ		234-157	01115	TERMINAL BOARD ASSEMBLY B		1
4	5	PAHZZ	5935-00-490-8260	182-602	01131	SOCKET, TRANSISTOR		2
4	6	PAHZZ	5935-00-490-8617	MSM1470-2	37915	SOCKET, ELECTRON TUBE		1
4	7	PAOZZ	5960-00-996-7077	6AU6	30131	ELECTRON TUBE		1
4	8	XDHZZ		RN20B3163F	31345	RESISTOR, FIXED, FIXED		2
4	9	PAHZZ	5910-00-593-2515	469	72136	CAPACITOR, VARIABLE, MICA		1
4	10	PAHZZ	5905-00-249-3661	RC20GF683J	31345	RESISTOR, FIXED, COMPOSITION		1
4	11	PAOZZ	5960-00-806-5614	7308	73445	ELECTRON TUBE		1
4	12	XDHZZ		RN70D5101F	31345	RESISTOR, FIXED, FILM		1
4	13	XDHZZ		811-402	01115	CHASSIS ASSEMBLY, ELECTRICAL EQUIPMENT		1
4	14	PAHZZ	5910-00-847-5583	160047304	56285	CAPACITOR, FIXED, PAPER		1
4	15	XDHZZ		RN20B3002F	31345	RESISTOR, FIXED, FILM		2
4	16	XDHZZ		RN25B6802F	31345	RESISTOR, FIXED, FILM		2
4	17	XDHZZ		RN20B1060F	31345	RESISTOR, FIXED, FILM		1
4	18	PAHZZ	5905-00-425-3700	2FXGLK	12695	RESISTOR, FIXED, WIRE WOUND		2
4	19	XDHZZ		234-156	01115	TERMINAL BOARD ASSEMBLY A		1
4	20	PAHZZ	5935-00-892-9035	UG-657/U	30056	CONNECTOR, RECEPTACLE, ELECTRICAL		1
4	21	PAHZZ	5935-00-283-2897	12A	32385	JACK, TELEPHONE		1
4	22	PAHZZ	5905-00-192-0390	RC20GF105J	31345	RESISTOR, FIXED, COMPOSITION		1
4	23	PAHZZ	5910-00-437-7645	192 P10402	56285	CAPACITOR, FIXED, PAPER		1
4	24	PAHZZ	5905-00-111-4840	RC20GF514J	31345	RESISTOR, FIXED, COMPOSITION		1

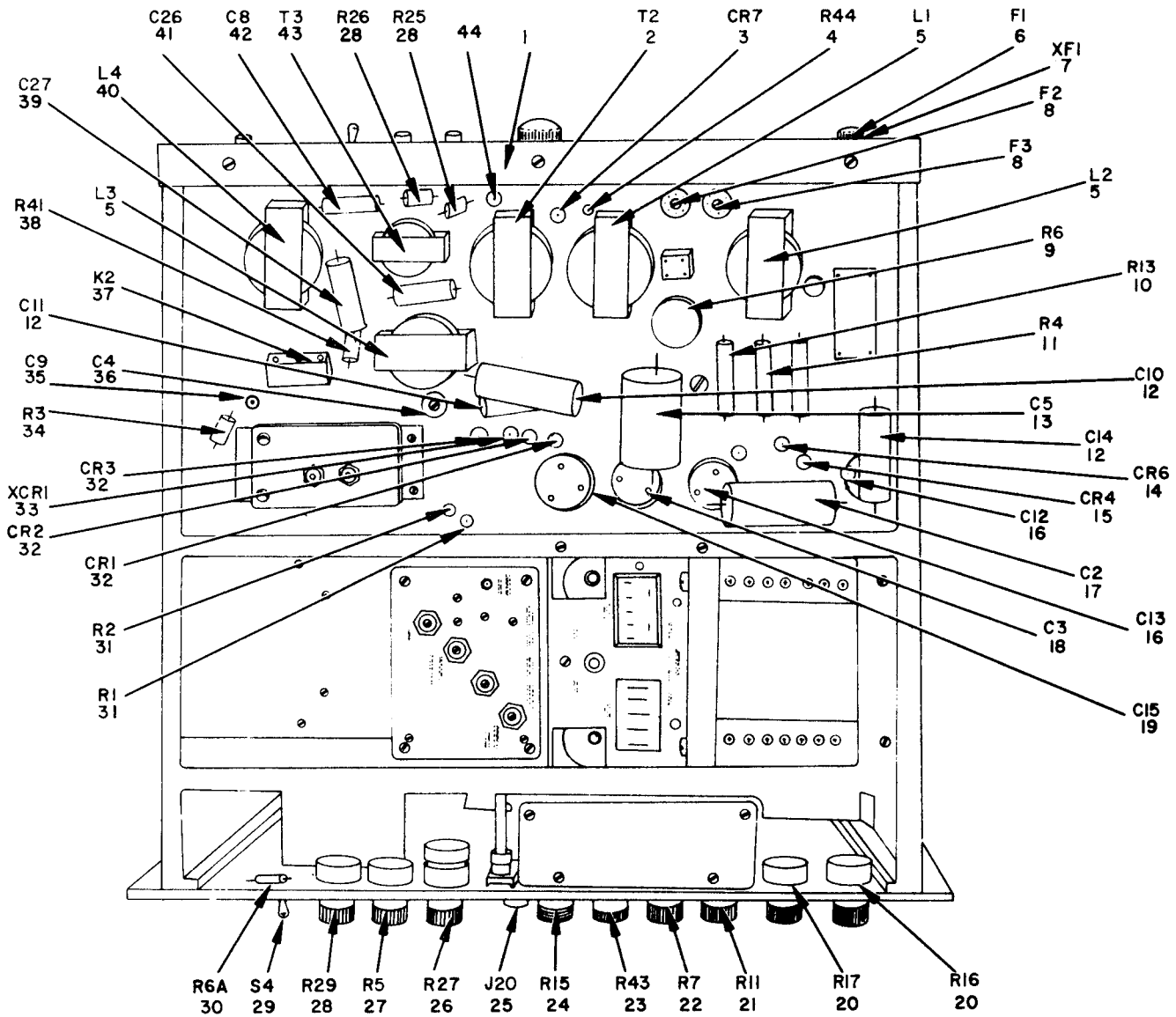
SECTION II

TM11-6625-1559-24P

(1)		(2)	(3)	(4)	(5)	(6)	USABLE ON CODE
UST	ON	MR	NATIONAL	PART	ICM	DESCRIPTION	
G	M	ODE	STOCK	NUMBER			
D.	J.						
	5	HZZ		AU	913	TERMINAL BOARD	
	6	HZZ	930-00-729-8445	16-63	1559	SWITCH, TOGGLE	
	7	HZZ	905-00-195-5516	142 GF152K	349	RESISTOR, FIXED, COMPOSITION	
	8	HZZ	910-00-729-8830	BR12-150	1022	CAPACITOR, FIXED, ELECTROLYTIC	
	9	HZZ	910-00-104-0706	TMS20	1289	CAPACITOR, FIXED, PAPER	
	0	HZZ		N25B1252F	1349	RESISTOR, FIXED, FILM	
	1	HZZ	905-00-249-9468	C20GF134J	1349	RESISTOR, FIXED, COMPOSITION	
	2	HZZ	935-00-241-4005	315AB	1585	CONNECTOR, PLUG, ELECTRICAL	
	3	HZZ		N25B8202F	1349	RESISTOR, FIXED, FILM	
	4	HZZ	905-00-279-1890	C20GF391J	1349	RESISTOR, FIXED, COMPOSITION	
	5	HZZ	905-00-254-9201	C20GF473J	1349	RESISTOR, FIXED, COMPOSITION	
	6	HZZ		A11D	7342	RELAY, ARMATURE	
	7	HZZ	940-00-329-5409	1UA	9135	TERMINAL BOARD	
	8	HZZ		M20-182G	2136	CAPACITOR, FIXED, MICA	
	9	HZZ	910-00-884-0256	.66	2136	CAPACITOR, VARIABLE, MICA	
	0	HZZ	961-00-943-9407	JAN2N3250A	1134	TRANSISTOR	
	1	HZZ	910-00-088-1236	M19-152J	2136	CAPACITOR, FIXED, MICA	

12 (13 blank)

TY
VC
IN
NIT



ELIGK005

Figure 5. Sweep Signal Generator SG-593/U, Bottom View, Cabinet Removed.

SECTION II

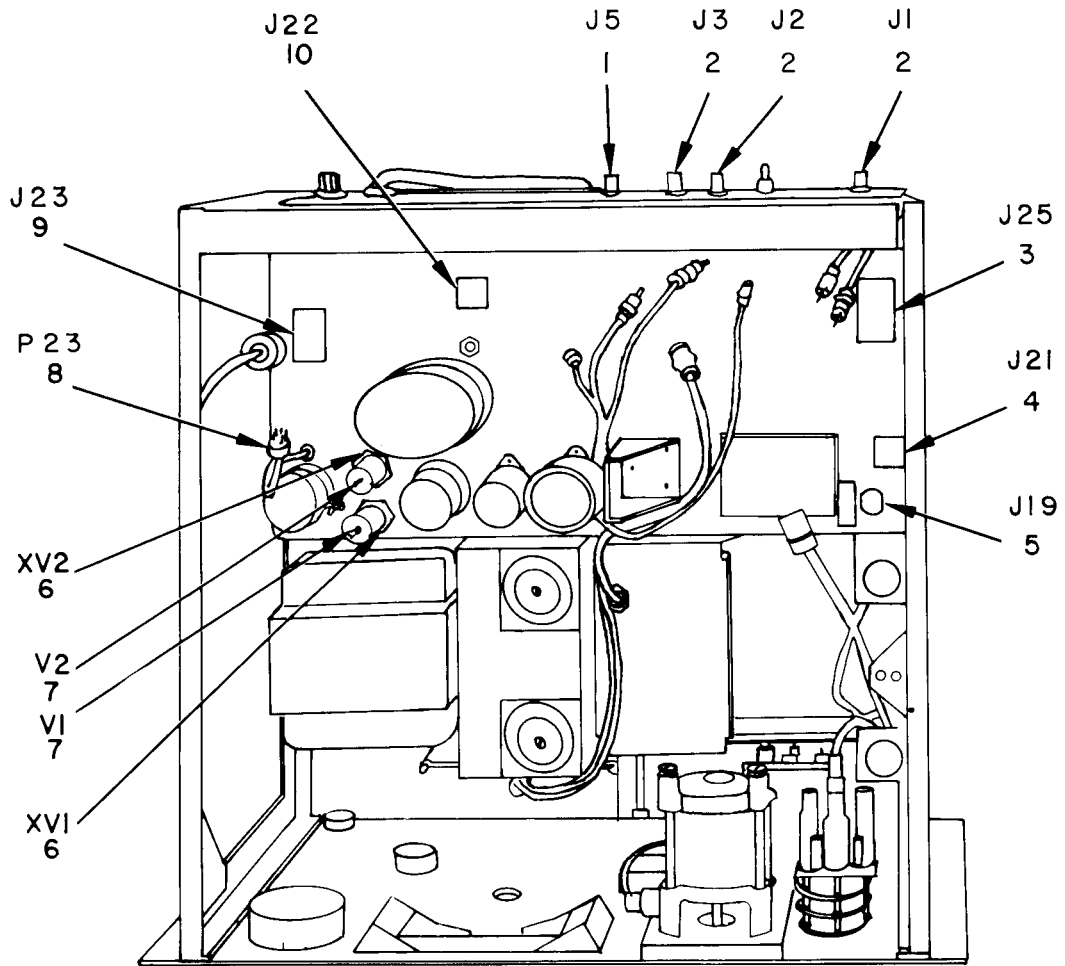
TM11-6625-1559-24P

LITERATURE		(2)	(3)	(4)	(5)	(6)	(7)
(a) FIG NO	(b) FIG NO.	SMR CODE	NATIONAL STOCK NUMBER	PART NUMBER	FSC1	DESCRIPTION	QTY INC IN UNIT
						USABLE ON CODE	U/A
						GROUP 0103 MAIN CHASSIS	
5	1	XDRZZ		810-658	0111	METALWORK ASSEMBLY	1
5	2	XDRZZ		141-192	0111	TRANSFORMER,AUDIO	1
5	3	PARZZ	5961-00-759-1312	CER70	1332	SEMICONDUCTOR DEVICE,DIODE	1
5	4	PARZZ	5905-00-034-5923	240ELR05	5622	RESISTOR , FIXED, WIRE WOUND	1
5	5	XDRZZ		C2304	8006	REACTOR	3
5	6	PAOZZ	5920-00-280-5062	312002	7591	FUSE, CARTRIDGE	1
5	7	PARZZ	5920-00-861-6082	HMB	7140	FUSEHOLDER	3
5	8	PAOZZ	5920-00-295-9600	313-100	7591	FUSE, CARTRIDGE	2
5	9	PARZZ	5905-00-257-7513	CLW5031	4461	RESISTOR,VARIABLE	1
5	10	XDRZZ		1-3-4D48F17500	4461	RESISTOR,FIXED, WIRE WOUND	1
5	11	XDRZZ		FRL10-4000	2466	RESISTOR, FIXED, WIRE WOUND	1
5	12	PARZZ	5910-00-845-9937	TD1500-6	7265	CAPACITOR,FIXED, ELECTROLYTIC	3
5	13	PARZZ	5910-00-086-6946	AFH2-40	0065	CAPACITOR, FIXED, ELECTROLYTIC	1
5	14	PARZZ	5961-00-952-6721	SOD30D	1332	SEMICONDUCTOR DEVICE, DIODE	1
5	15	PARZZ	5961-00-725-4075	HC30	1332	SEMICONDUCTOR DEVICE, DIODE	1
5	16	XDRZZ		AFH1-04	0065	CAPACITOR ,FIXED, ELECTROLYTIC	2
5	17	PARZZ	5910-00-087-3522	AFH1-52	0065	CAPACITOR, FIXED , ELECTROLYTIC	1
5	18	PARZZ	5910-00-583-1255	PRS1750	0065	CAPACITOR, FIXED,ELECTROLYTIC	1
5	19	PARZZ	5910-00-823-1476	WPO68	9020	CAPACITOR, FIXED, ELECTROLYTIC	1
5	20	PARZZ	5905-00-192-3987	RC20GF104K	8134	RESISTOR,FIXED, COMPOSITION	2
5	21	PARZZ	5905-00-114-5393	RC20GF224K	8134	RESISTOR,FIXED, COMPOSITION	1
5	22	PARZZ	5905-00-247-8730	RC32GD394J	8134	RESISTOR, FIXED,COMPOSITION	1
5	23	PARZZ	5905-00-763-9089	BWH10HMP0FM10PCT	7504	RESISTOR, FIXED, WIRE WOUND	1
5	24	XDRZZ		FRL10-300	2466	RESISTOR, FIXED, WIRE WOUND	1
5	25	PARZZ	5935-00-133-0395	1505-102	8331	JACK, TIP	1
5	26	PARZZ	5905-00-279-2621	RC20GF330K	8134	RESISTOR,FIXED, COMPOSITION	3
5	27	XDRZZ		FRL10- 5000	2466	RESISTOR, FIXED, WIRE WOUND	1
5	28	XDRZZ		118-088	7141	RESISTOR ,VARIABLE	1
5	29	PARZZ	5930-00-729-8445	316-63	7359	SWITCH,TOGGLE	1
5	30	AHZZ	905-00-279-3495	1C20GF753J	134	RESISTOR,FIXED,COMPOSITION	1
5	31	AHZZ	905-00-252-2995	1C20GF220K	134	RESISTOR,FIXED, COMPOSITION	2
5	32	DRZZ		3TCER72F	332	SEMICONDUCTOR DEVICE,DIODE	3
5	33	DRZZ		399067	591	HOLDER, SEMICONDUCTOR DEVICE	3
5	34	AHZZ	905-00-780-7571	1C20GF3R3J	134	RESISTOR,FIXED,COMPOSITION	1

SECTION II

TM11-6625-1559-24p

(1) LIST ITEM NO.		(2) FUNCTION CODE	(3) NATIONAL STOCK NUMBER	(4) PART NUMBER	(5) SCM	(6) DESCRIPTION USABLE ON CODE	(8) TY PC N UNIT
5	35	HZZ	910-00-814-7179	60P22494	5289	CAPACITOR , FIXED, PLASTIC ,DIELECTRIC	
5	36	HZZ	910-00-088-0328	R4-450	4655	CAPACITOR, FIXED, ELECTROLYTIC	L
5	37	HZZ		A11D	7342	RELAY, ARMATURE	L
5	38	HZZ	905-00-279-1692	032GF100J	1349	RESISTOR, FIXED, COMPOSITION	
5	39	HZZ		IP4S1	4655	CAPACITOR, FIXED, PLASTIC	
5	40	HZZ		ML1677	2459	REACTOR	
5	41	HZZ	910-00-051-1925	MS60	6289	CAPACITOR, FIXED, PLASTIC	
5	42	HZZ	910-00-985-2103	60P10492	6289	CAPACITOR, FIXED, PLASTIC	
5	43	HZZ		P321	3325	TRANSFORMER, AUDIO	
5	44	HZZ		11-169	1113	CHASSIS, ELECTRICAL, EQUIPMENT	
						16(17 blank)	



ELIGK006

Figure 6. Sweep Generator SG-593/U, Top View.

SECTION II

TM11-6625-1559-24P

(1) ILLUSTRATION		(2)	(3)	(4)	(5)	(6)	(7)	(8)
(a) FIG NO	(b) TEM NO	SMR CODE	NATIONAL STOCK NUMBER	PART NUMBER	FSCM	DESCRIPTION	USABLE ON CODE	QTY INC IN UNIT
6	1	PAHZZ	5935-00-223-8709	P306RP	71785	CONNECTOR , RECEPTACLE, ELECTRICAL		A 1
6	2	PAHZZ	5935-00-892-9035	UG-657/U	80058	CONNECTOR , RECEPTACLE, ELECTRICAL		A 3
6	3	PAHZZ	5935-00-257-7058	S315EB	71785	CONNECTOR , RECEPTACLE, ELECTRICAL		A 1
6	4	PAHZZ	5935-00-197-4331	S306AB	71785	CONNECTOR,RECEPTACLE,ELECTRICAL		A 1
6	5	XDHZZ		2675	71785	CONNECTOR,RECEPTACLE,ELECTRICAL		A 1
6	6	XDHZZ		04-703-02	91668	SOCKET , ELECTRON TUBE		A 2
6	7	PAOZZ	5960-00-503-1880	0A2WA	81349	ELECTRON TUBE		A 2
6	8	XDHZZ		2770K	71785	CONNECTOR,PLUG,ELECTRICAL		A 1
6	9	XDHZZ		13220	71785	CONNECTOR , RECEPTACLE, ELECTRICAL		A 1
6	10		5935-00-500-6174	S304AB	71785	CONNECTOR , RECEPTACLE , ELECTRICAL		A 1

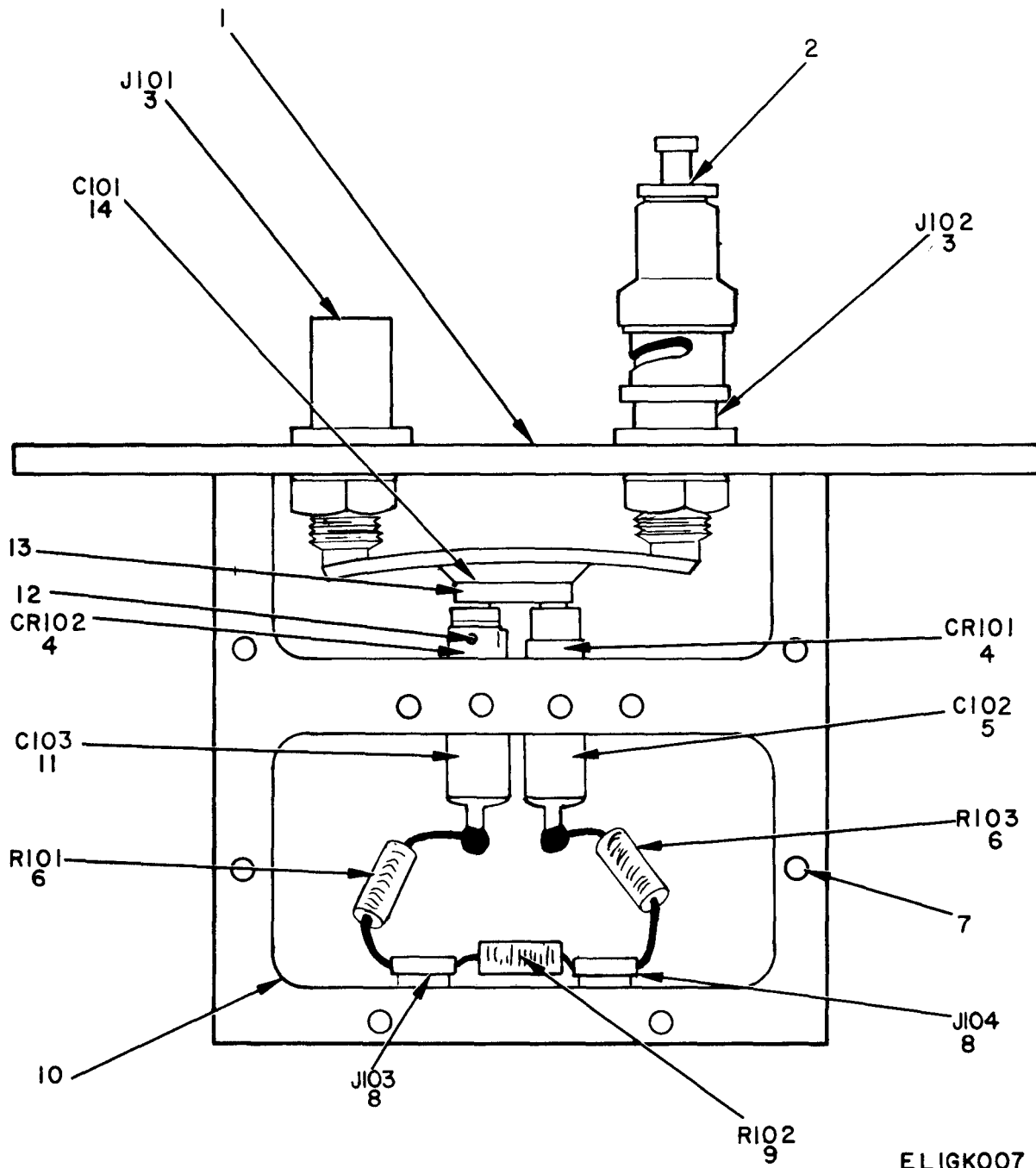
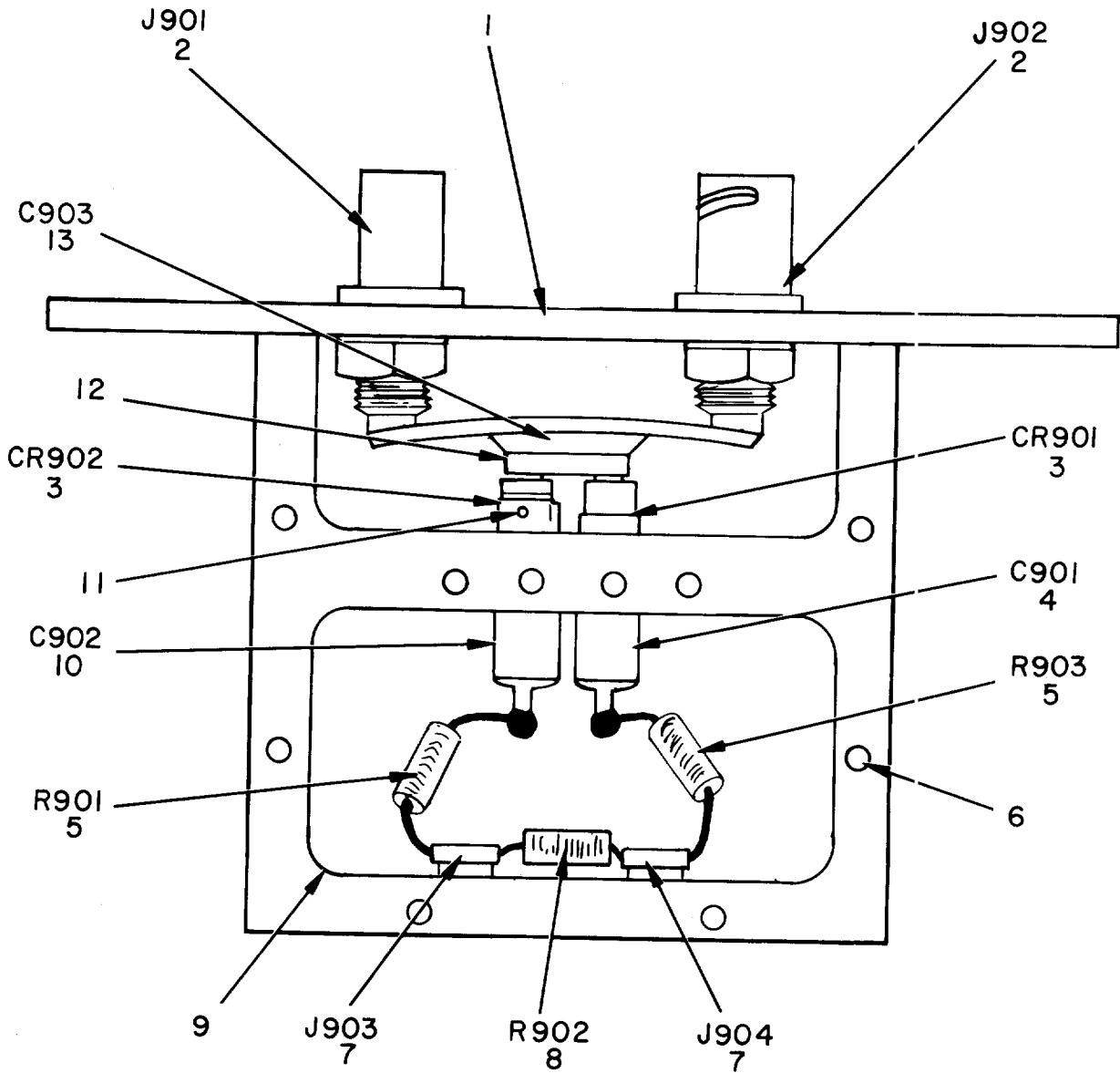


Figure 7. UHF-ALC Detector.

SECTION II

TM11-6625-1559-24P

LUS FIG NO.	TIC TEM NO.	(2)	(3)	(4)	(5)	(6)	QTY INC IN UNIT
		SMR CODE	NATIONAL STOCK NUMBER	PART NUMBER	FSCM	DESCRIPTION USABLE ON CODE	
						GROUP 0104 UHF-ALC DETECTOR	
7	1	DHZZ		222-116	1113	COVER, PLATE	E 1
7	2	AHZZ	6625-00-070-7998	DA- 505/U	10058	DUMMY LOAD, ELECTRICAL	E 1
7	3	AHZZ	5935-00-892-9035	UG657U	10058	CONNECTOR , RECEPTACLE, ELECTRICAL	E 2
7	4	AHZZ	5961-00-845-4593	139-106	1113	SEMICONDUCTOR DEVICE, DIODE	E 2
7	5	AHZZ	5910-00-070-7994	FA5C4701	1121	CAPACITOR, FIXED, MICA DIELECTRIC	E 1
7	6	AHZZ	5905-00-299-1965	RC20GF301J	1349	RESISTOR, FIXED, COMPOSITION	E 2
7	7	DHZZ		4-40X3-8FIL	1113	SCREW, MACHINE	E 8
7	8	AHZZ	5935-00-197-4319	101	13330	JACK , TELEPHONE	E 2
7	9	AHZZ	5905-00-192-3987	RC20GF104F	1349	RESISTOR, FIXED, COMPOSITION	E 1
7	10	DHZZ		222-166	1113	HOUSING, MACHINE DETECTOR	E 1
7	11	AHZZ	5910-00-802-7432	FA5C102W	1121	CAPACITOR, FIXED, MICA DIELECTRIC	E 1
7	12	DHZZ		6-32X3-16	1113	SETSCREW	E 2
7	13	AHZZ	5961-00-773-0108	222-115	1113	CLIP, CRYSTAL , DUAL TAPPED	E 1
7	14	DHZZ		0670-0014A0-102K	5450	CAPACITOR, FIXED, MICA DIELECTRIC	E 1



ELIGK008

Figure 8. Radio Frequency Detector RF-231/U.

SECTION II

(1)		(2)	(3)	(4)	(5)	(6)	(7)	(8)
_US1 (a) 7G 10.	ON) TEM)	MR DE	NATIONAL STOCK NUMBER	PART NUMBER	ICM	DESCRIPTION	USABLE ON CODE	QTY INC N NIT
						GROUP 0105 RF DETECTOR R P-231/U		
		HZZ		222-117	113	COVER, PLATE		
		HZZ	735-00-892-9035	UG657U	358	CONNECTOR, RECEPTACLE, ELECTRICAL		
		HZZ	761-00-902-8820	0-106	113	SEMICONDUCTOR DEVICE, DIODE		
		HZZ	710-00-802-7432	5C102W	121	CAPACITOR, FIXED, MICA DIELECTRIC		1
		HZZ	705-00-299-1965	20GF301J	349	RESISTOR, FIXED, COMPOSITION		3
		HZZ		40X5-16TRUSS-H	113	SCREW, MACHINE		2
		HZZ	735-00-197-4319	1	330	JACK, TELEPHONE		1
		HZZ	705-00-192-3987	20GF104K	349	RESISTOR, FIXED, COMPOSITION		1
		HZZ		2-166	113	HOUSING, MACHINED DETECTOR		1
		HZZ	910-00-070-7994	5C4701	121	CAPACITOR, FIXED, MICA DIELECTRIC		2
		HZZ		.32X3-16	113	SETSCREW		1
		HZZ	961-00-773-0108	2-115	113	CLIP, DUAL CRYSTAL		1
		HZZ		70-0014- 102K	450	CAPACITOR, FIXED, MICA DIELECTRIC		1

23(24 blank)

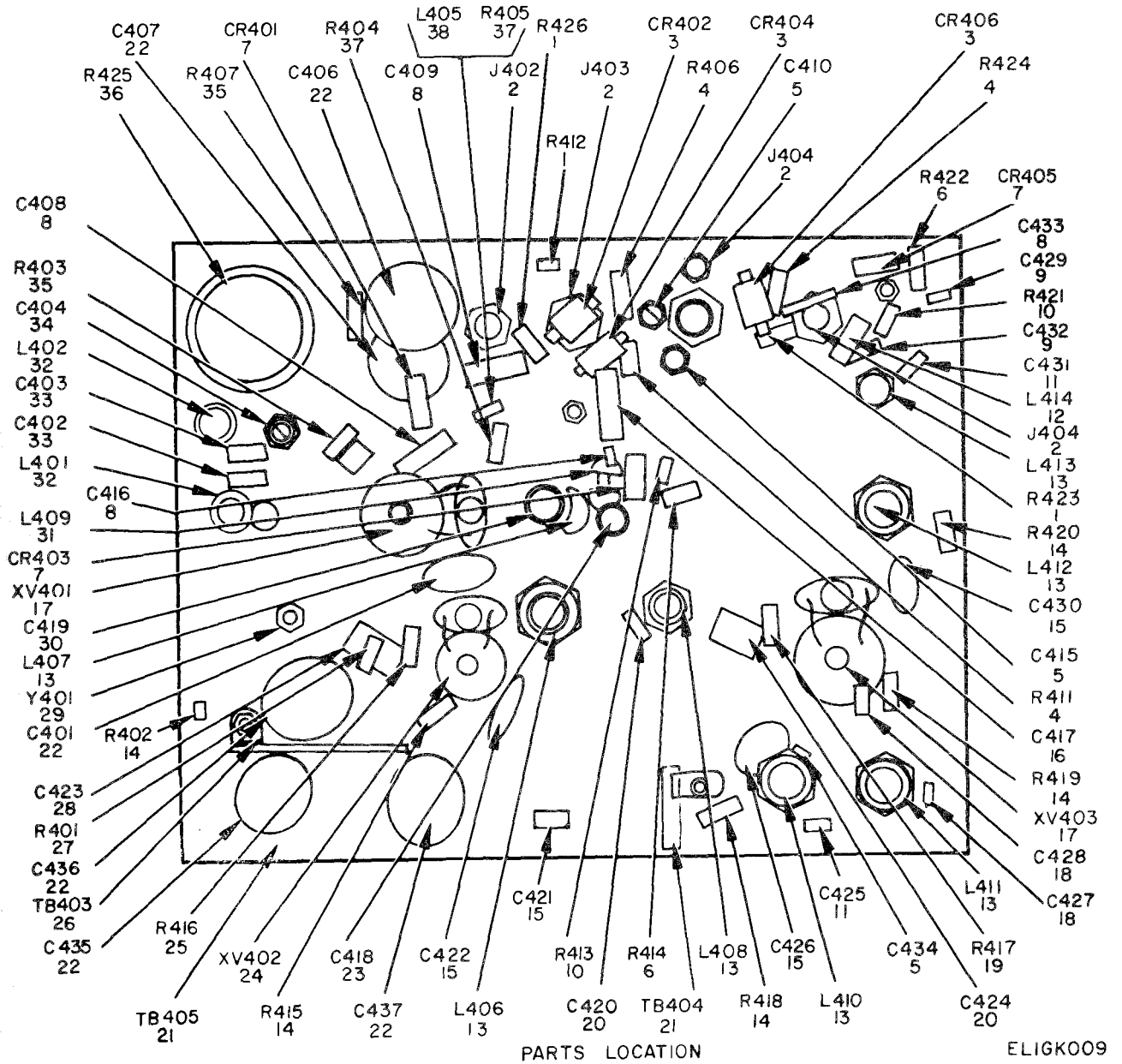


Figure 9. Generator, Harmonic Marker (Sheet 1 of 2).

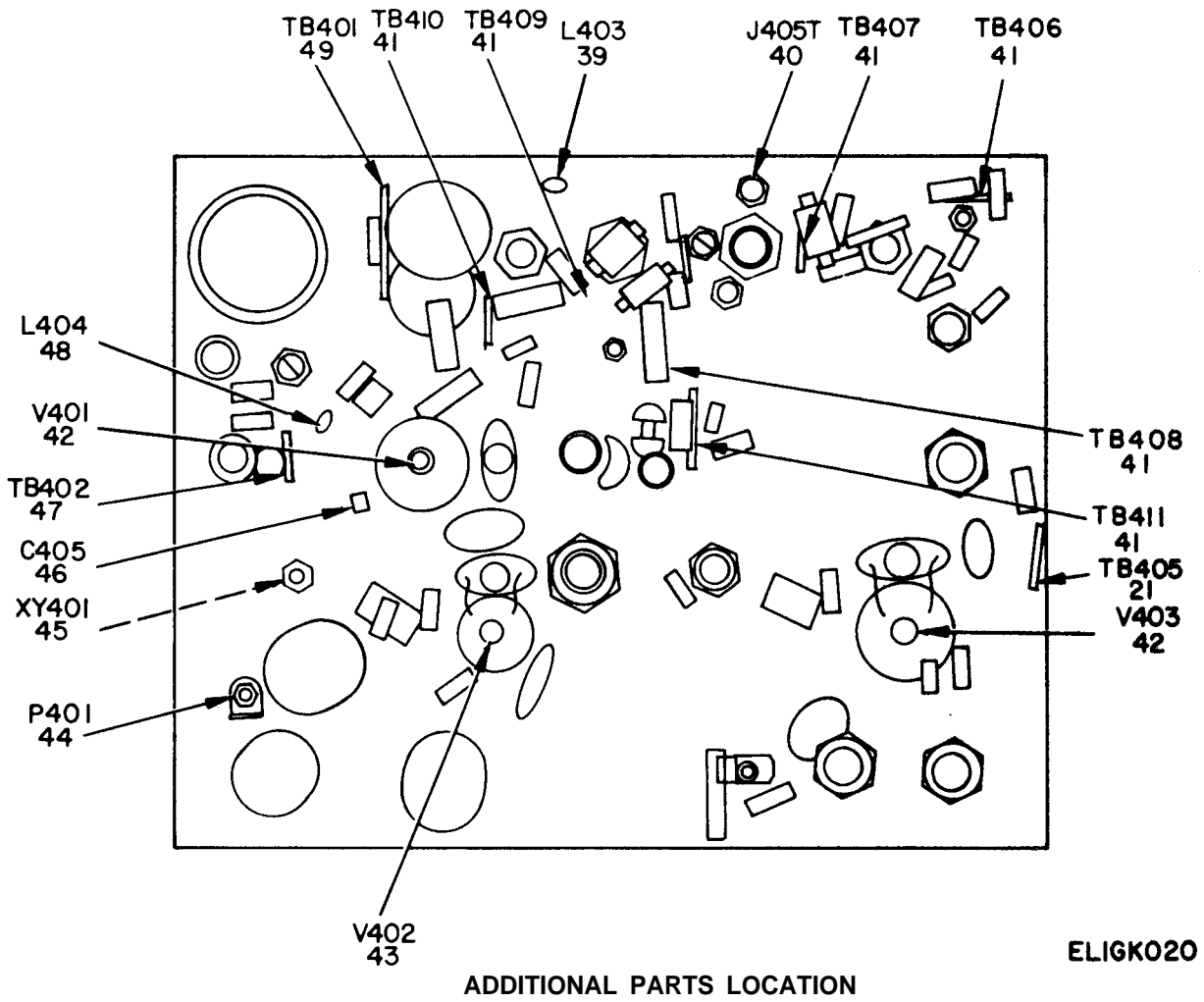


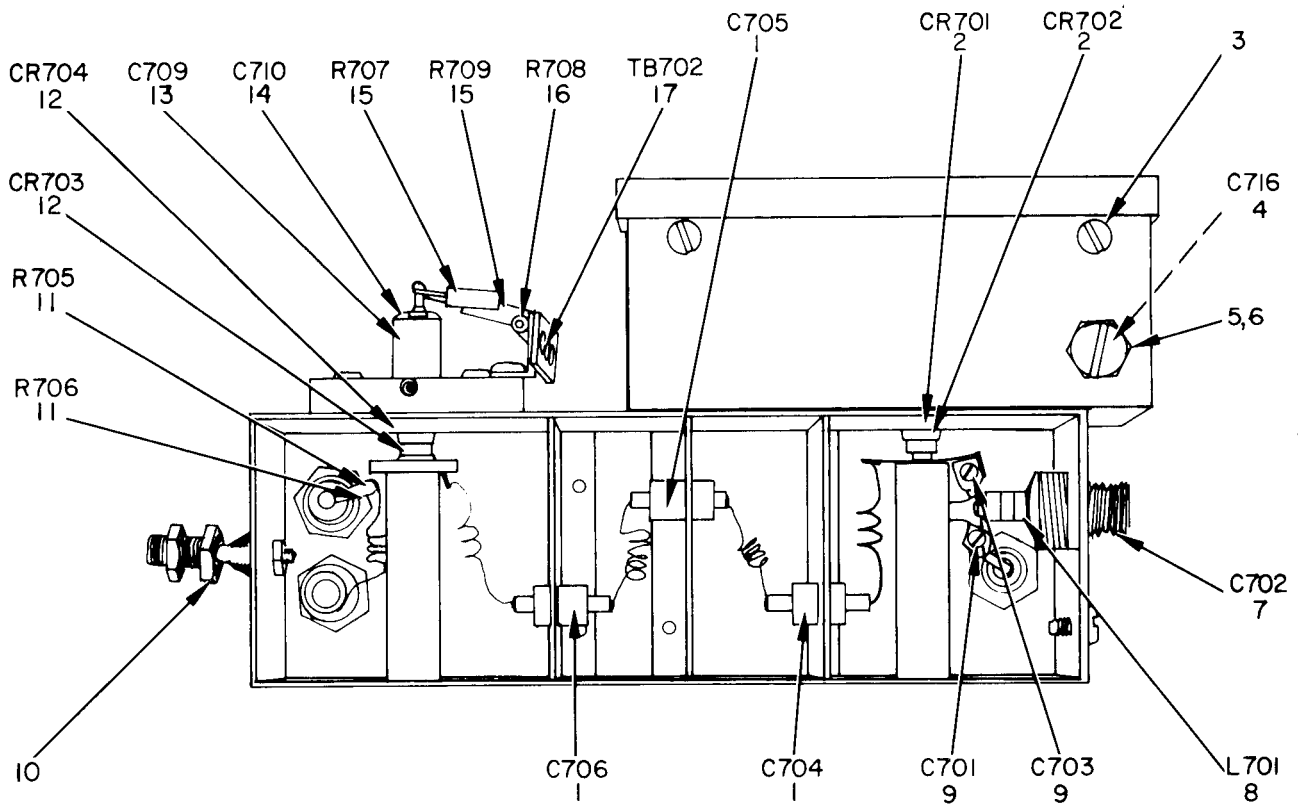
Figure 9. Generator, Harmonic Marker (Sheet 2 of 2).

SECTION II

TM11-6625-1559-24P

(1) ILLUSTRATION (a) FIG NO.		(2) SMR CODE	(3) NATIONAL STOCK NUMBER	(4) PART NUMBER	(5) FSCM	(6) DESCRIPTION USABLE ON CODE	(7)	(8) QTY INC IN UNIT
						GROUP 0106 GENERATOR,HARMONIC MARKER		
9	1	PAHZZ	5905-00-110-0196	RC20GF102K	11349	RESISTOR, FIXED, COMPOSITION	E	2
9	2	PAHZZ	5935-00-847-6803	3501FP	12389	JACK, TIP	E	3
9	3	PAHZZ	5961-00-729-0129	K3A	12703	SEMICONDUCTOR DEVICE, DIODE	E	3
9	4	PAHZZ	5905-00-299-1541	RC20GF151J	11349	RESISTOR, FIXED, COMPOSITION	E	3
9	5	KDHZZ	536-000-4R		5450	CAPACITOR, VARIABLE, PLASTIC	E	3
9	6	PAHZZ	5905-00-409-7616	RC20GF105K	11349	RESISTOR, FIXED, COMPOSITION	E	2
9	7	PAHZZ	5961-00-400-2010	1N87	10131	SEMICONDUCTOR DEVICE, DIODE	E	3
9	8	PAHZZ	5910-00-822-8214	DD470	11590	CAPACITOR, FIXED, CERAMIC	E	4
9	9	KDHZZ		TC21	11590	RESISTOR, FIXED, CERAMIC	E	2
9	10	PAHZZ	5905-00-279-3496	RC20GF51J	11349	RESISTOR, FIXED, COMPOSITION	E	2
9	11	PAHZZ	5910-00-063-0543	TC21R5	11590	CAPACITOR, FIXED, CERAMIC	E	2
9	12	PAHZZ	5950-00-022-5886	156-460	11113	COIL, RADIO FREQUENCY	E	1
9	13	KDHZZ		811-244	11113	COIL, RADIO FREQUENCY	E	7
9	14	PAHZZ	5905-00-192-3987	RC20GF104K	11349	RESISTOR, FIXED, COMPOSITION	E	5
9	15	KDHZZ		811	5450	CAPACITOR, FIXED, CERAMIC	E	4
9	16	KDHZZ		301-000COK0688L	5450	CAPACITOR, FIXED, CERAMIC	E	1
9	17	PAH??	5935-00-222-9828	9714	12825	SOCKET, ELECTRON TUBE	E	2
9	18	PAHZZ	5910-00-063-0538	TCN24	11590	CAPACITOR, FIXED, CERAMIC	E	2
9	19	PAHZZ	5905-00-295-3410	RC20GF473K	11349	RESISTOR, FIXED, COMPOSITION	E	1
9	20	PAHZZ	5910-00-804-2379	CM15C151G03	11349	CAPACITOR, FIXED, MICA	E	2
9	21	KDHZZ		2AU	17913	TERMINAL BOARD	E	2
9	22	PAHZZ	6625-00-401-9682	BPD203	10656	CAPACITOR, FIXED, CERAMIC	E	6
9	23	PAHZZ	5910-00-702-5718	DD390	11590	CAPACITOR, FIXED, CERAMIC	E	1
9	24	PAHZZ	5935-00-490-8617	MSM1470-2	17913	SOCKET, ELECTRON TUBE	E	1
9	25	PAHZZ	5905-00-190-8835	RC20GF225J	11349	RESISTOR, FIXED, COMPOSITION	E	1
9	26	KDHZZ		61-4AH	17913	TERMINAL BOARD	E	1
9	27	KDHZZ		RC20GF563J	11349	RESISTOR, FIXED, COMPOSITION	E	1
9	28	PAHZZ	5910-00-264-9427	CM15E300J	11349	CAPACITOR, FIXED, MICA	E	1
9	29	PAHZZ	5955-00-043-1346	F605	11766	CRYSTAL UNIT QUARTZ	E	1
9	30	PAHZZ	5910-00-984-8369	CM15E161J	11349	CAPACITOR, FIXED, MICA	E	1
9	31	PAHZZ	5950-00-022-5876	156-459	11113	COIL, RADIO FREQUENCY	E	1
9	32	PAHZZ	5950-00-490-5175	811-245	11113	COIL, RADIO FREQUENCY	E	2
9	33	PAHZZ	5910-00-984-7787	CM15E121J	11349	CAPACITOR, FIXED, MICA	E	2
9	34	PAHZZ	5910-00-712-8192	TCZ3R3	11590	CAPACITOR, FIXED, CERAMIC	E	1
9	35	PAHZZ	5905-00-185-8510	RC20GF103J	11349	RESISTOR, FIXED, COMPOSITION	E	2

LLU FIG NO.	(1) TIO (b) TEN NO.	(2) SMR CODE	(3) NATIONAL STOCK	(4) PART NUMBER	(5) FSC#	(6) DESCRIPTION USABLE ON CODE	7 UAM	(8) QTY INC IN UNIT
9	36	DXZZ		CLU1031	4655	RESISTOR,VARIABLE	E	1
9	37	PAZZ	5905-00-279-3517	RC20GF510J	1349	RESISTOR,FIXED, COMPOSITION	E	2
9	38	PAZZ	5950-00-022-5874	156-457	1113	COIL, RADIO FREQUENCY	E	1
9	39	PAZZ	5950-00-022-5898	156-461	1113	COIL,RADIO FREQUENCY	E	1
9	40	PAZZ	5935-00-892-9035	UG657U	10058	CONNECTOR, RECEPTACLE, ELECTRICAL	E	1
9	41			69-3103	13801	TERMINAL BOARD	E	6
9	42	PAZZ	5960-00-676-9016	6922	10131	ELECTRON ,TUBE	E	2
9	43	PAZZ	5960-00-822-9222	6CB6A	10131	ELECTRON ,TUBE	E	1
9	44	PAZZ	5935-00-242-5283	P304CCT	1785	CONNECTOR, PLUG, ELECTRICAL	E	1
9	45	PAZZ	5935-00-496-5927	CS5013-1	7913	SOCKET, CRYSTAL	E	1
9	46	PAZZ	5910-00-543-0052	TCN20	1590	CAPACITOR, FIXED,CERAMIC	E	1
9	47	DXZZ		2HA	7913	TERMINAL, BOARD	E	1
9	48	PAZZ	5950-00-022-5875	156-458	1113	COIL, RADIO FREQUENCY	E	1
9	49	DXZZ		2HAA	1113	TERMINAL,BOARD	E	1



ELIGK010

Figure 10. Mixer Stage, Frequency, Side Interior View.

SECTION II

TM11-6625-1559-24P

NO	ILLUSTRATION		(3) NATIONAL STOCK NUMBER	(4) PART NUMBER	(5) FSCM	(6) DESCRIPTION	7. UNABLE ON CODE	(8) QTY INC IN UNIT
	(a) FIG NO	(b) ITEMS SMR R NO CODEE						
10	101	XDHZZZ		111-123	1113	GROUP 0107 MIXER STAGE, FREQUENCY CAPACITOR ASSEMBLY	A	3
10	102	PAHZZ	5961-00-845-763	.39-107	1113	SEMICONDUCTOR DEVICE, DIODE	A	2
10	3	XDHZZ		.-32X3-8PH	1113	SCREW, MACHINE	A	2
10	4	PAHZZ	5910-00-780-8526	36-048-4R	2982	CAPACITOR, VARIABLE, PLASTIC	A	1
10	5	XDHZZ		.-56X9-16RH	1113	SCREW, MACHINE	A	1
10	6	XDHZZ		52-009	1113	WASHER, FLAT	A	1
10	7	XDHZZ		IFT65A	1113	CAPACITOR, VARIABLE, PLASTIC	A	1
10	8	XDHZZ		15-101	1113	STRIP, COPPER	A	1
10	9	XDHZZ		36-000-4R	5450	CAPACITOR, VARIABLE, PLASTIC	A	2
10	10	XDHZZ		1-32	1113	NUT, PLAIN, HEXAGON	A	4
10	11	PAHZZ	5905-00-141-1187	IC99GF101J	1349	RESISTOR, FIXED, COMPOSITION	A	2
10	12	PAHZZ	5961-00-845-459	39-111	1113	SEMICONDUCTOR DEVICE, DIODE	A	2
10	13	PAHZZ	5910-00-802-743	A5C102W	1121	CAPACITOR, FIXED, MICA	A	1
10	14	PAHZZ	5910-00-070-799	A5C4701	1121	CAPACITOR, FIXED, MICA	A	1
10	15	PAHZZ	5905-00-299-196	IC20GF301J	1349	RESISTOR, FIXED, COMPOSITION	A	2
10	16	PAHZZ	5905-00-185-851	IC20GF103K	1349	RESISTOR, FIXED, COMPOSITION	A	1
10	17	XDHZZ	5940-00-329-540	1AUA	7913	TERMINAL BOARD	A	1

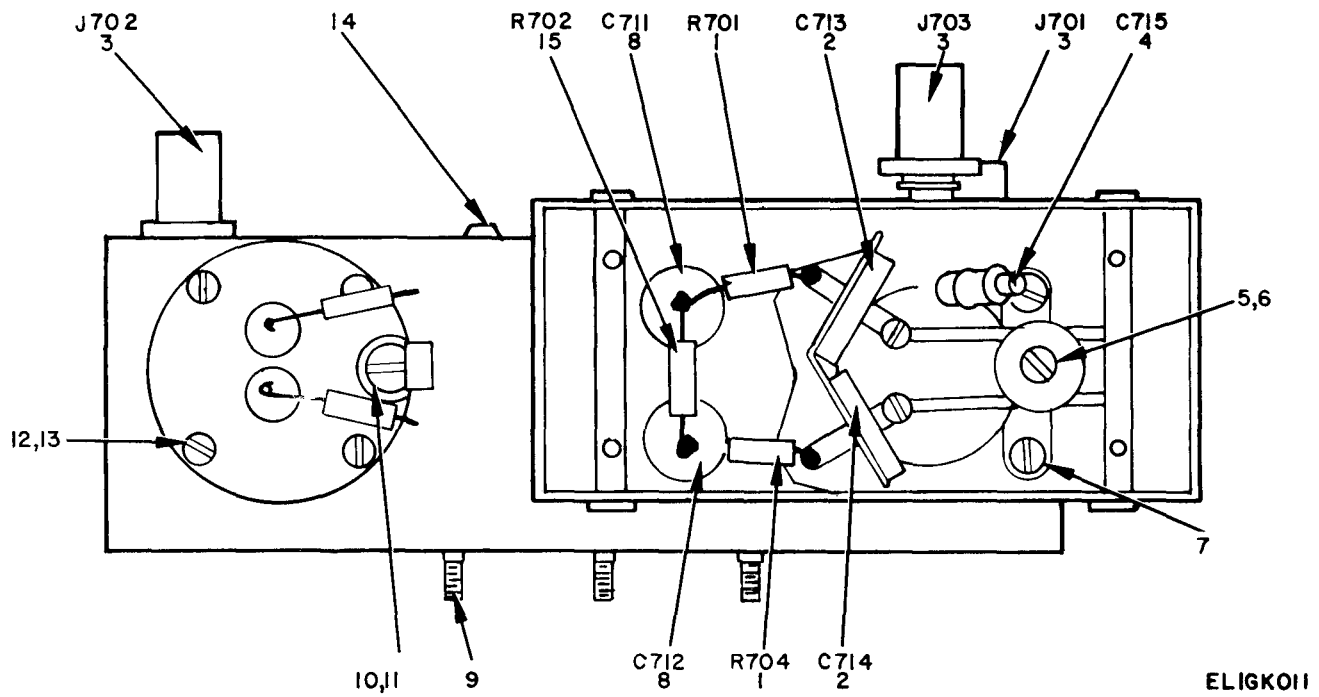
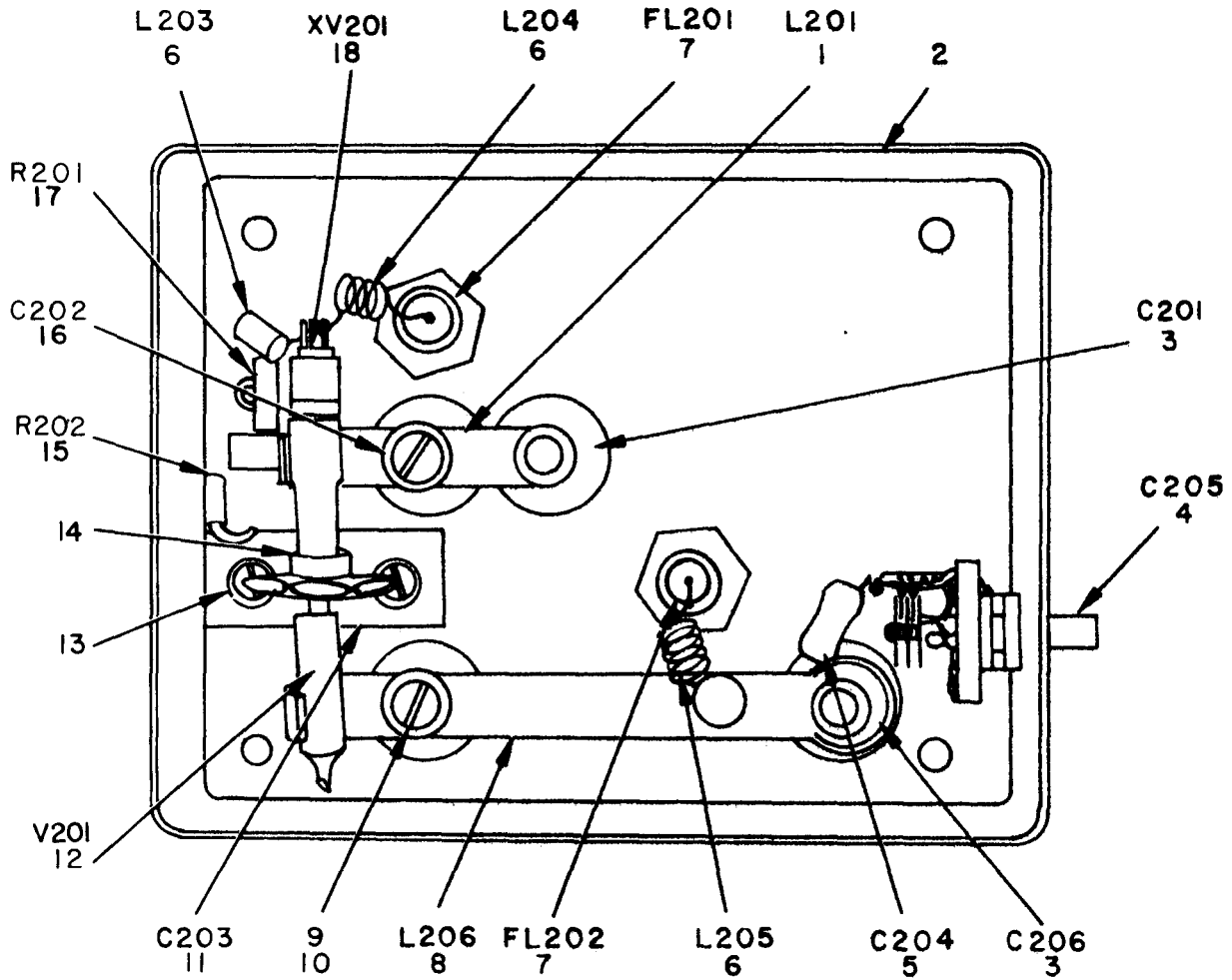


Figure 11. Mixer Stage, Frequency, Bottom Interior View.

SECTION II

TM11-6625-1559-24 P

(1) ILLUSTRATION		(2)	(3)	(4)	(5)	(6)	(7)	(8)
(a) FIG NO.	(b) ITEN NO.	SMR CODE	NATIONAL STOCK NUMBER	PART NUMBER	FSCM	DESCRIPTION <i>UNABLE ON CODE</i>	J/M	QTY INC IN UNIT
11		PAHZZ	5905-00-810-354	RC20GF5R1J	3134	RESISTOR, FIXED, COMPOSITION	A	2
11		PAHZZ	5910-00-667-575	4700CB	7298	CAPACITOR, FIXED, MICA	A	2
11		PAHZZ	5935-00-892-903	JG-657/U	3005	CONNECTOR, RECEPTACLE, ELECTRICAL	A	3
11		KDHZZ		536-000-4R	1545	CAPACITOR, VARIABLE, PLASTIC	A	1
11		KDHZZ		4X3-16HH	0111	SCREW, ASSEMBLED	A	9
11		KDHZZ		5X1-4HH	0111	SCREW, ASSEMBLED WASHER	A	2
11		KDHZZ		2-56X3-16RH	0111	SCREW, MACHINE	A	2
11		PAHZZ	5910-00-829-6957	98292ZNI1	0650	CAPACITOR, FIXED, PAPER	A	2
11		KDHZZ		4X3-8BHSTL	0111	SCREW, TAPPING, THREAD CUTTING	A	3
11	1	KDHZZ		2-56X1-4RH	0111	SCREW, MACHINE	A	1
11	1	KDHZZ		3IT	0111	WASHER, LOCK	A	2
11	1	KDHZZ		4-40X1-2RH	0111	SCREW, MACHINE	A	4
11	1	KDHZZ		5IT	0111	WASHER, LOCK	A	11
11	1	KDHZZ		5-32X1-4PH	0111	SCREW, MACHINE	A	7
11	1	PAHZZ	5905-00-299-196	RC20GF301J	3134	RESISTOR, FIXED, COMPOSITION	A	1



ELIGK012

Figure 12. Oscillator, Fixed, Interior View.

SECTION II

TM11-6625-1559-24P

LLUM FIG NO.	IATK ITEI NO.	SMR CODE	(3)	(4)	(5)	(6)	7. A	(8) QTY INC IN UNIT
			NATIONAL STOCK NUMBER	PART NUMBER	FSCM	DESCRIPTION USABLE ON CODE		
						GROUP 0108 OSCILLATOR, FIXED		
12	1	DHZZ		811-120	01113	INDUCTOR ASSEMBLY , CATHODE	EA	1
12	2	DHZZ		810-316	01113	METALWORK ASSEMBLY	EA	1
12	3	DHZZ		HFT65A	01113	CAPACITOR , VARIABLE, PLASTIC	EA	2
12	4	AHZZ	5910-00-681-9204	MAC5	80583	CAPACITOR, VARIABLE, AIR	EA	1
12	5	DHZZ		331000COK0159C	72982	CAPACITOR, FIXED, CERAMIC	EA	1
12	6	DHZZ		156-089	01113	COIL, RADIO, FREQUENCY	EA	3
12	7	AHZZ	5915 -00-070-7997	823-018	01113	FILTER ASSEMBLY	EA	2
12	8	DHZZ		811-121	01113	INDUCTOR ASSEMBLY , PLATE	EA	1
12	9	DHZZ		4-40X3-4RH	01113	SCREW, MACHINE	EA	2
12	10	DHZZ		2161	01113	WASHER, NONMETALLIC	EA	2
12	11	DHZZ		811-122	01113	CAPACITOR ASSEMBLY	EA	1
12	12	AOZZ	5960-00-188-3899	5675	81349	ELECTRON TUBE	EA	1
12	13	DHZZ		6-32X3-8PHSTL	01113	SCREW, MACHINE	EA	8
12	14	DHZZ		224-016	01113	CLIP, GRID, CAPACITOR	EA	1
12	15	AHZZ	5905-00-295-3410	RC20GF473K	81349	RESISTOR, FIXED, COMPOSITION	EA	1
12	16	AHZZ	5910-00-270-4852	370FA	72982	CAPACITOR, FIXED, MICA	EA	1
12	17	AHZZ	5905-00-186-3008	RC20GF101K	81349	RESISTOR, FIXED, COMPOSITION	EA	1
12	18	AHZZ	5935-00-888-1439	22-3	81073	SOCKET , ELECTRON TUBE	EA	1

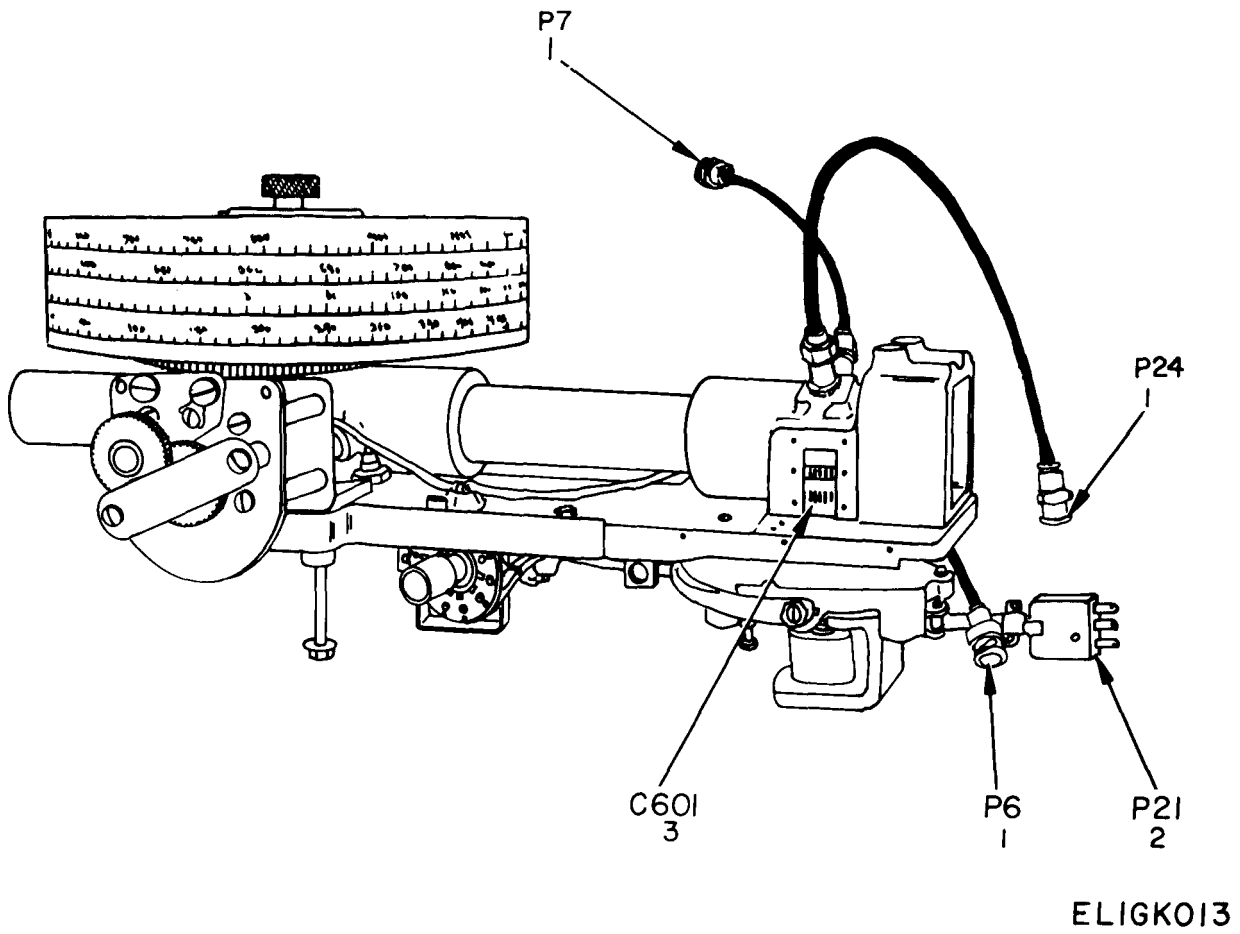
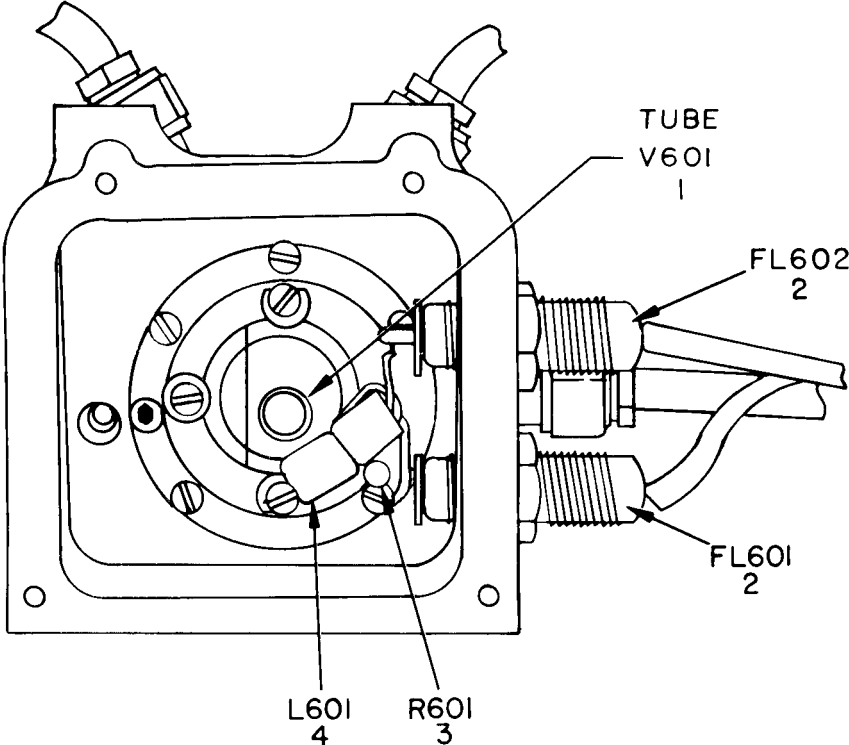


Figure 13. Sweep Oscillator Signal Generator, Sweep Head Removed.

SECTION II

TM11-6625-1559-24P

(1) ILLUSTRATION		(2)	(3)	(4)	(5)	DESCRIPTION	(7)	(8)
(a) FIG. O.	(b) ITEM NO.	SMR CODE	NATIONAL STOCK NUMBER	PART NUMBER	FSCN		USABLE ON CODE	QTY INC IN UNIT
						GROUP 0109 SWEEP OSCILLATOR		
13	PAHZZ	5935-00-149-406	1G88U	3005	CONNECTOR, PLUG, ELECTRICAL			1
13	CDRZZ		161-12-06-030	178	CONNECTOR, PLUG, ELECTRICAL			1
13	PAHZZ	5935-00-774-625	322-004	1111	WOBULATOR ASSEMBLY			1



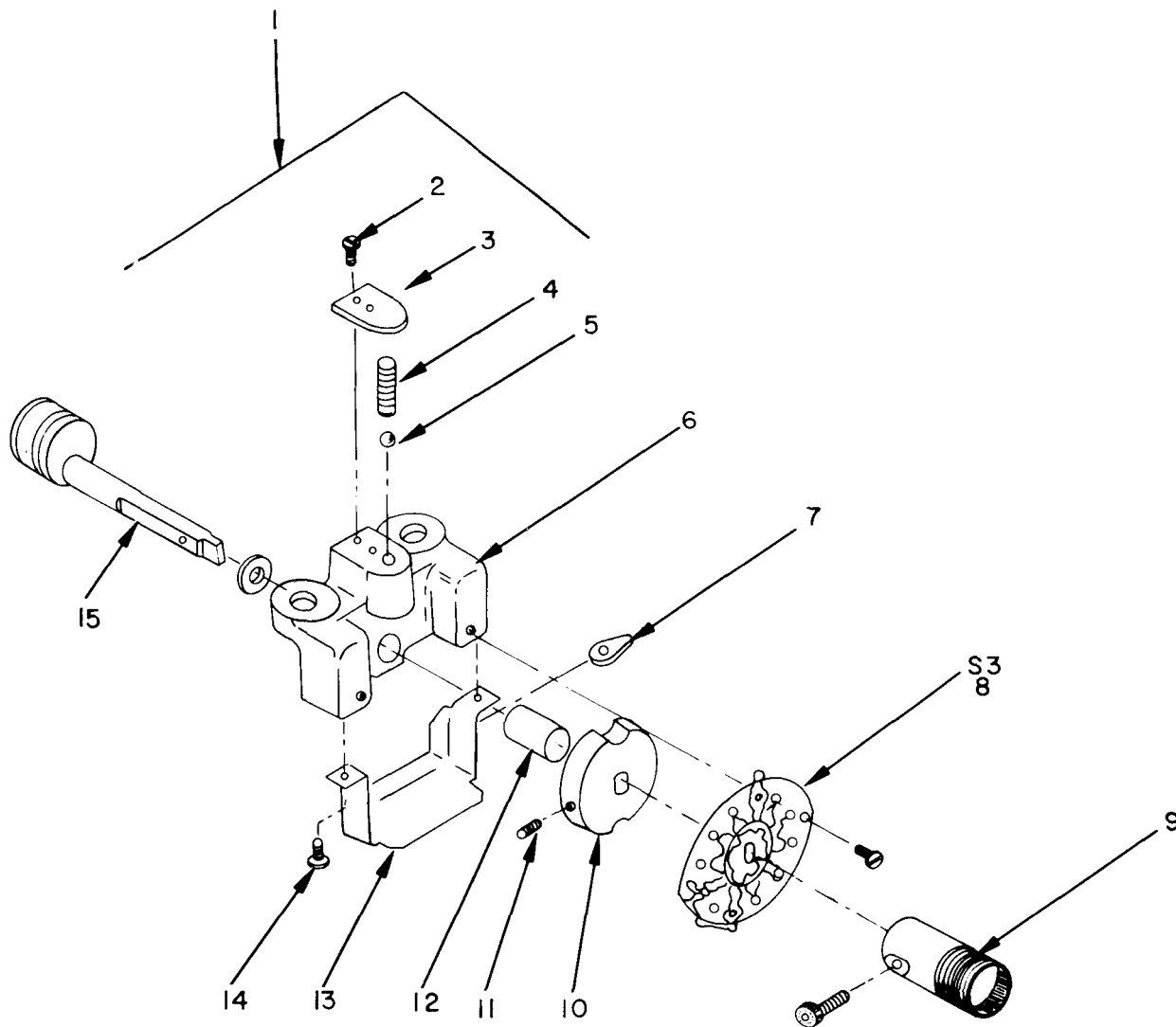
ELIGK014

Figure 14. Sweep Oscillator, Compartment of Sweep Head, Interior View.

Section II

TM11-6625-1559-24P

(1) ILLUSTRATION		(2)	(3)	(4)	(5)	(6)	(7)	(8)
(a) FIG NO.	(b) ITEM NO.	SMR CODE	NATIONAL STOCK NUMBER	PART NUMBER	FSC#	DESCRIPTION	USABLE ON CODE	QTY INC IN UNIT
14	1	PAHZZ	5960-00-070-0274	15-107	0111	ELECTRON TUBE		1
14	2	PAHZZ	5915-00-070-7997	23-018	0111	FILTER ASSEMBLY		2
14	3	PAHZZ	5905-00-279-3504	C20GF472J	3134	RESISTOR, FIXED, COMPOSITION		1
14	4	PAHZZ	5625-00-072-4577	56-749	0111	REACTOR		1



ELIGK015

Figure 15. Sweep Oscillator, Control Gear Assembly.

SECTION II

TM11-6625-1559-24P

(1) ILLUSTRATION		(2)	(3)	(4)	(5)	(6)	(7)	(8)
(a) FIG NO.	(b) ITEM NO.	SMR CODE	NATIONAL STOCK NUMBER	PART NUMBER	FSCM	DESCRIPTION USABLE ON CODE	U/M	QTY INC IN UNIT
15	1	PAHZZ	6625-00-072-4578	811-239	01113	SWITCH ASSEMBLY , DETENT	EA	1
15	2	XDZZ		4-40X1-4RHS	01113	SCREW, SELF-TAPPING, THREAD CUTTING	EA	2
15	3	XDZZ		213-333	01113	PLATE, SPRING RETAINER	EA	1
15	4		5360-00-948-7267	LC026B7	84830	SPRING, HELICAL, COMPRESSION	EA	1
15	5	XDZZ		233-007	01113	BALL, NYLON	EA	1
15	6	XDZZ		228-136	01113	HOUSING, DETENT	EA	1
15	7	XDZZ		701-003	01113	TERMINAL,LUG	EA	1
15	8	PAHZZ	5930-00-490-5174	161-124	01113	SWITCH SECTION ,ROTARY	EA	1
15	9	XDZZ		211-218	01113	BODY, COUPLING	EA	1
15	10	XDZZ		231-142	01113	CAM, CONTROL	EA	1
15	11	XDZZ		8-32X5 -16SSS	01113	SETSCREW	EA	1
15	12	XDZZ		AA335-5	70417	BEARING, SLEEVE	EA	1
15	13	XDZZ		212-329	01113	COVER , WAFER	EA	1
15	14	XDZZ		4-40X3 -16RHS	01113	SCREW, SELF-TAPPING, THREAD CUTTING	EA	4
15	15	XDZZ		811-250	01113	CAM ASSEMBLY	EA	1

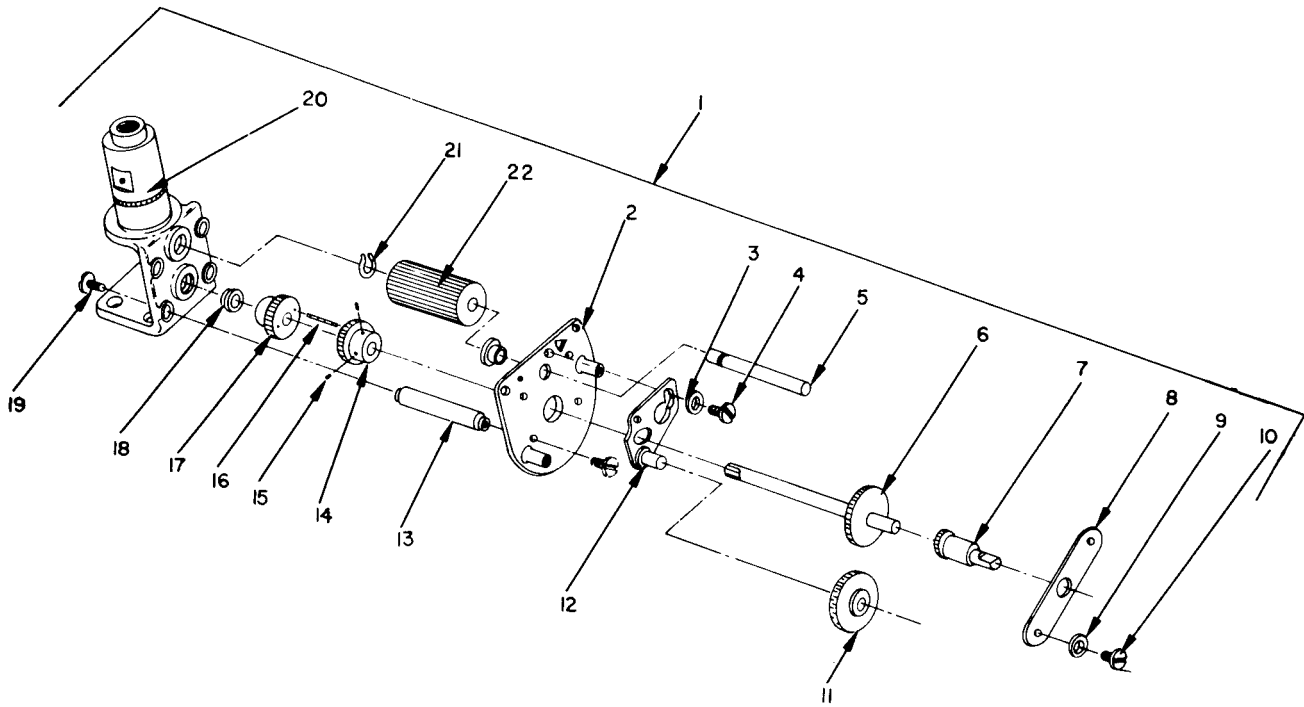
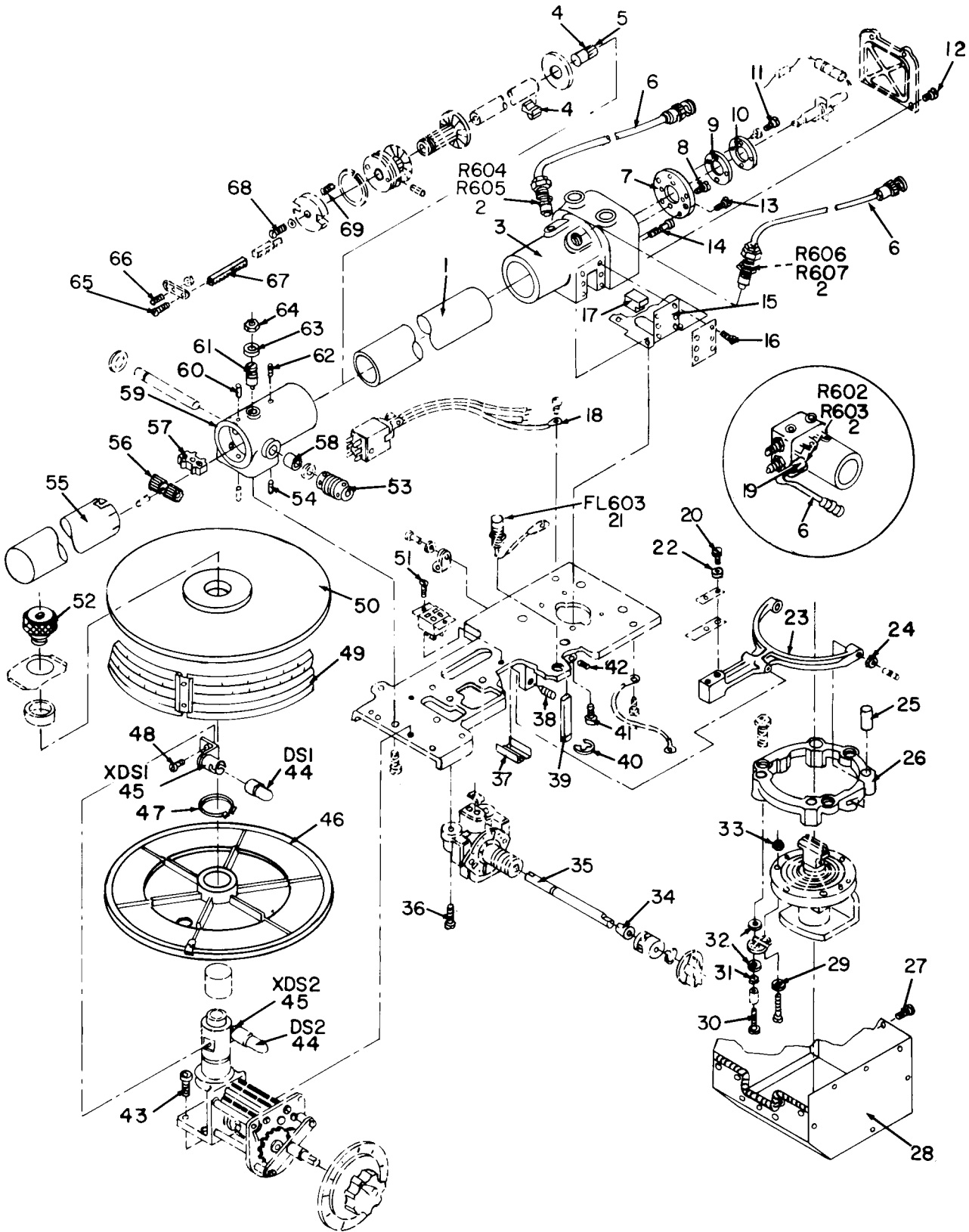


Figure 16. Sweep Oscillator, Frequency MegaHertz Control Gear Assembly.

SECTION II

TM11-6625-1559-24P

(1) ILLUSTRATION		(2)	(3)	(4)	(5)	(6)	(8)
(a) FIG NO.	(b) ITEM NO.	SMR CODE	NATIONAL STOCK NUMBER	PART NUMBER	FSCM	DESCRIPTION <i>USABLE ON CODE</i>	QTY INC IN UNIT
16	1	XDHZZ		11-259	1113	GEAR ASSEMBLY, SPEED DECREASER	1
16	2	XDHZZ		22-146	1113	PLATE, FRONT	1
16	3	XDHZZ		1T	1113	WASHER, LOCK	2
16	4	XDHZZ		0-32X1-48H	1113	SCREW, MACHINE	2
16	5	XDHZZ		26-026	1113	SHAFT, SHOULDERED	1
16	6	XDHZZ		78-025	1113	GEAR, SPUR	1
16	7	XDHZZ		78-027	1113	GEAR, SPUR	1
16	8	XDHZZ		14-328	1113	BRACKET, RETAINER	1
16	9	XDHZZ		01T	1113	WASHER, LOCK	1
16	10	XDHZZ		1-32X1-48H	1113	SCREW, MACHINE	2
16	11	XDHZZ		78-028	1113	GEAR CLUSTER SPUR	1
16	12	XDHZZ		11-258	1113	GEAR AND SHAFT ASSEMBLY	1
16	13	XDHZZ		26-024	1113	SHAFT, SHOULDERED	1
16	14	XDHZZ		78-029	1113	GEAR SHAFT, SPUR	1
16	15	XDHZZ		1-32X3-16SSSCHC	1113	SETSCREW	2
16	16	XDHZZ		15094-0250	8515	PIN, GROOVED, HEADLESS	1
16	17	XDHZZ		78-024	1113	GEAR, SPUR	1
16	18	XDHZZ		F312	0417	BEARING, SLEEVE	4
16	19	XDHZZ		1-32X3-88H	1113	SCREW, MACHINE	8
16	20	XDHZZ		11-253	1113	CAM ASSEMBLY	1
16	21	XDHZZ		133-25	1113	RING, RETAINING	1
16	22	XDHZZ		78-022	1113	GEAR, SPUR	1



ELIGK017

Figure 17. Sweep Oscillator, Sweep Head, Exploded View.

SECTION II

TM11-6625-1559-24P

(1) ILLUSTRATION		(2)	(3)	(4)	(5)	(6)	(7)	(8)
(a) FIG NO.	(b) ITEM NO.	SMR CODE	NATIONAL STOCK NUMBER	PART NUMBER	FSCM	DESCRIPTION USABLE ON CODE	I/A	QTY INC IN UNIT
17	1	XDHZZ		212-370	01113	COVER, CAVITY	EA	1
17	2	XDHZZ		RC99GF10LJ	81349	RESISTOR, FIXED, COMPOSITION	EA	6
17	3	XDHZZ		228-130	01113	HOUSING, FRONT	EA	1
17	4	XDHZZ		811-263	01113	ROD ASSEMBLY, INNER	EA	1
17	5	XDHZZ		221-103	01113	CONTACT, ELECTRICAL	EA	1
17	6	XDHZZ		RG55AU	80058	CABLE, RADIO FREQUENCY	EA	3
17	7	XDHZZ		221-192	01113	FLANGE, GRID	EA	1
17	8	XDHZZ		4-40X1-4RH	01113	SCREW, MACHINE	EA	5
17	9	XDHZZ		238-146	01113	INSULATOR, GRID CLAMP	EA	1
17	10	XDHZZ		221-099	01113	CLAMP, GRID	EA	1
17	11	XDHZZ		2-56X3 -16RH	01113	SCREW, MACHINE	EA	2
17	12	XDHZZ		4-4 0X1-4FILH	01113	SCREW, MACHINE	EA	4
17	13	XDHZZ		4-4 0X3-4FILH	01113	SCREW, MACHINE	EA	1
17	14	XDHZZ		4-40X3-4	01113	SCREW, CAP, SOCKET HEAD	EA	2
17	15	XDHZZ		214-289	01113	GASKET SHIELD	EA	1
17	16	XDHZZ		10-32X1-2RH	01113	SCREW, MACHINE	EA	1
17	17	XDHZZ		128-204	01113	PLATE, CAPACITOR	EA	1
17	18			701-033	01113	TERMINAL, LUG	EA	1
17	19	XDHZZ		221-102	01113	CONE, PROBE	EA	1
17	20	XDHZZ		6-32X1-4BH	01113	SCREW, MACHINE	EA	4
17	21	PAHZZ	5915-00-07 0-7997	823-018	01113	FILTER ASSEMBLY	EA	1
17	22	XDHZZ		3IT	01113	WASHER, LOCK	EA	2
17	23	XDHZZ		811-238	01113	FORK, ASSEMBLY	EA	1
17	24	XDHZZ		10-32	01113	NUT, PLAIN, HEXAGON	EA	2
17	25	XDHZZ		211-197	01113	BUSHING, SLEEVE	EA	4
17	26	XDHZZ		228-132	01113	RING, MOUNTING	EA	1
17	27	XDHZZ		4-40X3-16	01113	SCREW, SELF TAPPING, THREAD CUTTING	EA	21
17	28	XDHZZ		811-236	01113	COVER ASSEMBLY, WOBULATOR	EA	1
17	29	XDHZZ		10IT	01113	WASHER, LOCK	EA	1
17	30	XDHZZ		6-32X3-4SS	01113	SCREW, CAP, HEXAGON HEAD	EA	3
17	31	XDHZZ		6IT	01113	WASHER, LOCK	EA	4
17	32	XDHZZ		1-2 0DX7-32IDX3-6	01113	WASHER, FLAT	EA	2
17	33	XDHZZ		3-48SST	01113	NUT, PLAIN, HEXAGON	EA	2
17	34	XDHZZ		273-017	01113	BEARING, SLEEVE	EA	3
17	35	XDHZZ		226-020	01113	SHAFT, SHOULDERED	EA	1
17	36	XDHZZ		10-32X3-8	01113	SCREW, CAP, SOCKET HEAD	EA	9
17	37	XDHZZ		218-030	01113	RETAINER, GASKET	EA	1
17	38	XDHZZ		1-4-28X3 -8SCHCO	01113	SETScrew	EA	2
17	39	XDHZZ		226-019	01113	SHAFT, SHOULDERED	EA	1
17	40	XDHZZ		221-198	01113	RING, RETAINING	EA	5

SECTION II

TM11-6625-1559-24P

(1) ILLUSTRATION		(2)	(3)	(4)	(5)	(6)	(7)	(8)
(a) FIG NO	(b) ITEM VO	SMR CODE	NATIONAL STOCK NUMBER	PART NUMBER	FSCM	DESCRIPTION	USABLE ON CODE	QTY INC IN UNIT
17	41	XDHZZ		10-32X1-2SS	0111	SCREW, CAP, SOCKET HEAD		1
17	42	XDHZZ		10-32X3-16SCHCU	0111	SETSCREW		1
17	43	XDHZZ		10-32X3-8SS	0111	SCREW, CAP, SOCKET HEAD		2
17	44	PAHZZ	6240-00-155-8706	47	0810	LAMP, INCANDESCENT		2
17	45	XDHZZ		502-8136-2132-80	7261	LAMPHOLDER		2
17	46	XDHZZ		811-277	0111	GEAR, ASSEMBLY, SPIRAL		1
17	47	XDHZZ		100-5100	0111	RING, RETAINING		1
17	48	XDHZZ		1-4-20X1-20H	0111	SCREW, MACHINE		2
17	49	PAHZZ	5355-00-401-9642	219-231	0111	DIAL, SCALE		1
17	50	XDHZZ		811-281	0111	DISC ASSEMBLY, TOP DIAL		1
17	51	XDHZZ		6-32X5-8BH	0111	SCREW, MACHINE		3
17	52	XDHZZ		221-187	0111	SCREW, DIAL HUB		1
17	53	XDHZZ		104110-5	8062	COUPLING, SHAFT, FLEXIBLE		1
17	54	XDHZZ		23S125-0375	7851	PIN, GROOVED, HEADLESS		1
17	55	XDHZZ		229-110	0111	COVER, RACK		1
17	56	XDHZZ		278-019	0111	GEAR CLUSTER, SPUR		1
17	57	XDHZZ		232-073	0111	SUPPORT, RACK		1
17	58	XDHZZ		AA304-7	7041	BEARING, SLEEVE		2
17	59	XDHZZ		228-135	0111	HOUSING, REAR		1
17	60	XDHZZ		23S125-0250	7851	PIN, GROOVED, HEADLESS		1
17	61	XDHZZ		221-190	0111	BOLT, RACK SUPPORT		1
17	62	XDHZZ		6-32X3-16SCHCUP	0111	SETSCREW		1
17	63	XDHZZ		754-005-1	0111	WASHER, SPRING TENSION		1
17	64	XDHZZ		3-8-32	0111	NUT, PLAIN, HEXAGON		1
17	65	XDHZZ		256X3-16RH	0111	SCREW, MACHINE		4
17	66	XDHZZ		4-40X5-16SCHFP	0111	SETSCREW		1
17	67	XDHZZ		811-264	0111	SLIDER ASSEMBLY, OUTER		1
17	68	XDHZZ		6-32X3-16BH	0111	SCREW, MACHINE		1
17	69	XDHZZ		224-014	0111	SPRING, HELICAL, COMPRESSION		2

46/(47 blank)

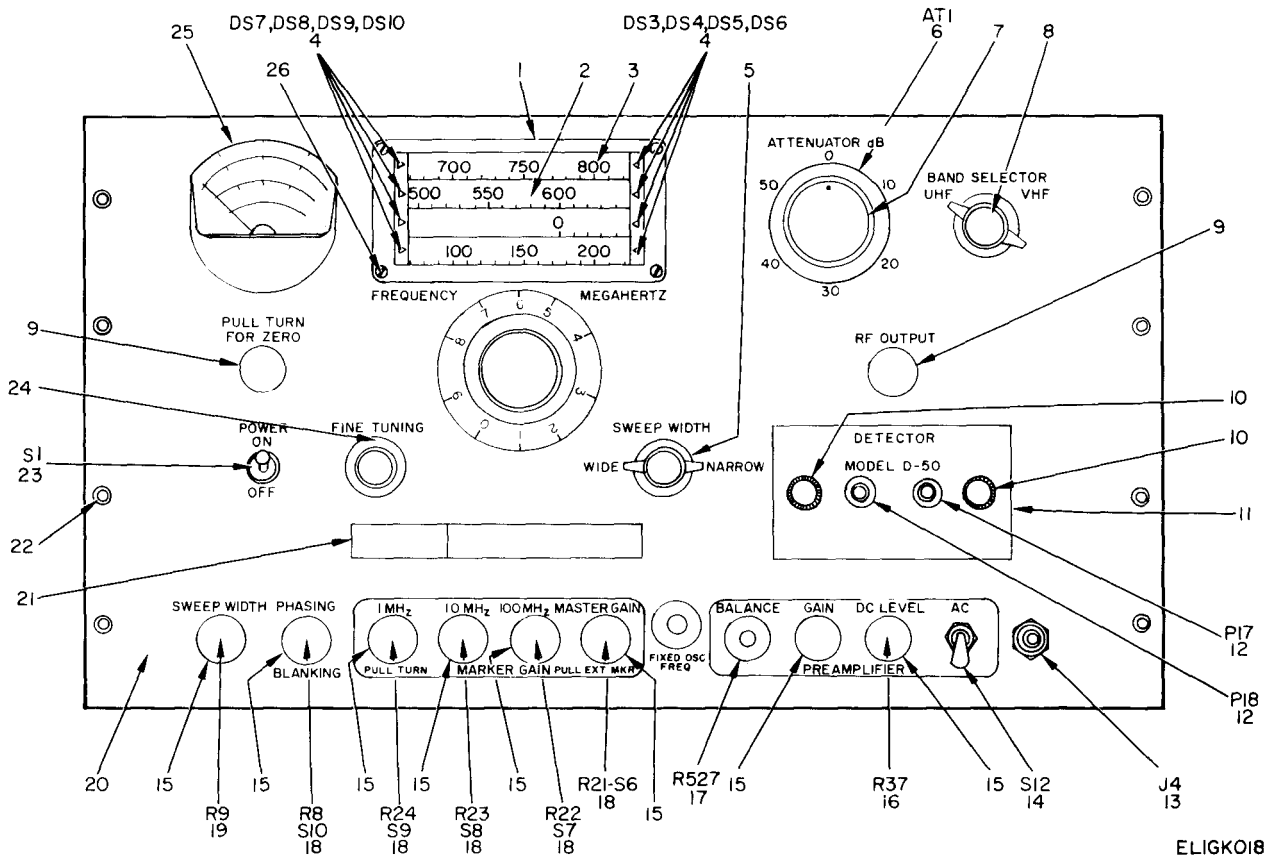
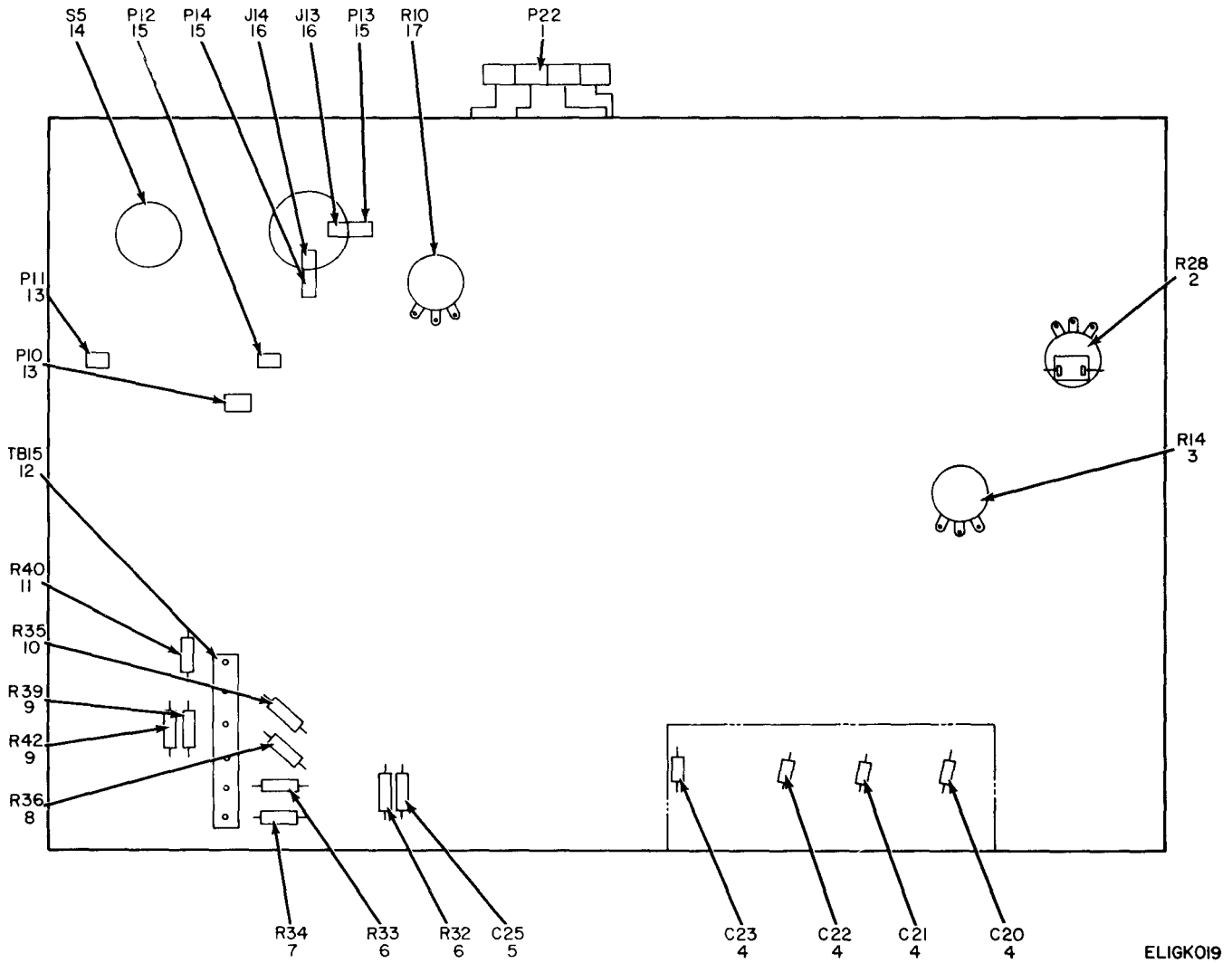


Figure 18. Panel assembly front (controls and indicators).

SECTION II

TM11-6625-1559-24P

(1) ILLUSTRATION		(2)	(3)	(4)	(5)	(6)	(8)
(a) FIG NO.	(b) ITEM NO.	SMR CODE	NATIONAL STOCK NUMBER	PART NUMBER	FSCM	DESCRIPTION USABLE ON CODE	QTY INC IN UNI
						GROUP 0110 PANEL ASSEMBLY , FRONT	
18	1	XDHZZ		214-298	01113	BRACKET, DIAL	1
18	2	PAHZZ	3355-00-179-8677	237-003	01113	WINDOW , DIAL	1
18	3	PAHZZ	3355-00-880-5153	232-088	01113	VERNIER, DIAL WINDOW	1
18	4	PAOZZ	240 -00-943 -7560	NE2P	08806	LAMP , NEON	8
18	5	XDOZZ		S1676-33-40D	75376	KNOB	1
18	6	PAHHH	3905-00-413-4407	818-107	01113	ATTENUATOR	1
18	7	XDOZZ		265 BLACK	30813	KNOB	1
18	8	PAOZZ	3355 -00-403-9936	239-067	01113	KNOB	1
18	9	XDOZZ		S1677-3WSKIRT	01113	KNOB	2
18	10	XDHZZ		10-32	01113	THUMBSCREW	2
18	11	XDHZZ		811-519	01113	CARRIAGE , ASSEMBLY, DETECTOR	1
18	12	XDHZZ	3935-00-076-9704	102	33330	CONNECTOR, PLUG, ELECTRICAL	2
18	13	PAHZZ	3935-00-850-8876	UG909U	30058	CONNECTOR, RECEPTACLE , ELECTRICAL	1
18	14	PAHZZ	3930-00-729-8445	316-63	73559	SWITCH, TOGGLE	1
18	15	XDOZZ		S1777-313-160D	75376	KNOB	8
18	16	XDHZZ		J82182	01121	RESISTOR, VARIABLE	1
18	17	PAHZZ	3905-00-490-8374	LR8723	71450	RESISTOR, VARIABLE	1
18	18	XDHZZ		45-2551	71450	RESISTOR, VARIABLE	5
18	19	XDHZZ		JA2N056P104AA	01121	RESISTOR, VARIABLE	1
18	20	XDHZZ		216-258	01113	PANEL , FRONT	1
18	21	XDHZZ		219-373	01113	PLATE, IDENTIFICATION	1
18	22	XDHZZ		10-32X5-8FH	01113	SCREW, MACHINE	10
18	23	PAHZZ	3930-00-231-1491	T110B63	73559	SWITCH , TOGGLE	1
18	24	XDOZZ		S1657-3140004	75376	KNOB	1
18	25	PAHZZ	3625-00-081-2824	171-207	01113	AMMETER	1
18	26	XDHZZ		10-32X3-8PH	01113	SCREW, MACHINE	4



ELIGK019

Figure 19. Panel Assembly Front Wiring Diagram Interior View.

SECTION II

TM11-6625-1559-24P

(1) ILLUSTRATION		(2)	(3)	(4)	(5)	(6)	(7)	(8)
(a) FIG NO	(b) ITEI NO	SMR CODE	NATIONAL STOCK NUMBER	PART NUMBER	FSCM	DESCRIPTION USABLE ON CODE	↑	QTY INC IN UNIT
GROUP 0110 FRONT PANEL INTERIOR VIEW								
19	1	'AHZZ	5935-00-242-5283	P304CCT	'1785	CONNECTOR , PLUG, ELECTRICAL	1A	1
19	2	'DHZZ		45-2552	'145C	RESISTOR, VARIABLE	1A	1
19	3	'AHZZ	5905-00-490-8373	KH6474	'145C	RESISTOR, VARIABLE	1A	1
19	4	'AHZZ	5910-00-666-7615	D6-331	'159C	CAPACITOR, FIXED, CERAMIC	1A	4
19	5	'AHZZ	5910-00-825-3252	6TMD20		CAPACITOR, FIXED, PLASTIC	1A	1
19	6	'AHZZ	5905-00-279-2657	RC20GF565K	31345	RESISTOR, FIXED, COMPOSITION	1A	2
19	7	'AHZZ	5905-00-114-5456	RC20GF684J	31345	RESISTOR, FIXED, COMPOSITION	1A	1
19	8	'AHZZ	5905-00-435-6561	RC20GF305J	31345	RESISTOR, FIXED, COMPOSITION	1A	1
19	9	'AHZZ	5905-00-111-4744	RC20GF512J	31345	RESISTOR, FIXED, COMPOSITION	1A	2
19	10	'AHZZ	5905-00-111-4739	RC20GF754J	31345	RESISTOR, FIXED, COMPOSITION	1A	1
19	11	'AHZZ	5905-00-249-9468	RC20GF134J	31345	RESISTOR, FIXED, COMPOSITION	1A	1
19	12	'DHZZ		61-4AH	'7915	TERMINAL BOARD	1A	1
19	13	'AHZZ	5935-00-642-4238	JG88U	3005E	CONNECTOR, PLUG, ELECTRICAL	1A	2
19	14	'AHZZ	6625-00-072-4583	822-042	'1115	SWITCH ASSEMBLY, COAXIAL	1A	1
19	15	'AHZZ	5935-00-642-4238	UG-88/U	3005E	CONNECTOR, PLUG, ELECTRICAL	1A	3
19	16	'AHZZ	1560-00-835-1444	185-131	'1115	CONNECTOR, RECEPTACLE , ELECTRICAL	1A	2
19	17	'DHZZ		45-2550	'145C	RESISTOR, VARIABLE	1A	1

SECTION IV

NATIONAL STOCK NUMBER AND PART NUMBER INDEX

TML1-6625-1559-24P

NOTE: LATEST NATIONAL STOCK NUMBER AND PART NUMBER ASSIGNMENTS ARE INCLUDED AT END OF INDEX

STOCK NUMBER	FIGURE NO.	ITEM NO.	STOCK NUMBER	FIGURE NO.	ITEM NO.
5950-00-022-5874	9	38	5940-00-329-5409	3	22
5950-00-022-5876	9	31	5940-00-329-5409	4	47
5950-00-022-5886	9	12	5940-00-329-5409	10	17
5905-00-034-5923	5	4	5961-00-400-2010	9	7
5905-00-050-3913	3	10	5355-00-401-9642	17	49
5910-00-051-1925	5	41	6625-00-401-9680	2	2
5910-00-063-0538	9	18	6625-00-401-9681	2	7
5960-00-070-0274	14	1	6625-00-401-9682	2	4
5910-00-070-7994	7	5	6625-00-401-9682	9	22
5910-00-070-7994	8	10	6625-00-401-9684	2	1
5910-00-070-7994	10	14	6625-00-401-9685	2	9
5915-00-070-7997	12	7	6625-00-401-9686	2	5
6625-00-070-7998	1	5	5355-00-403-9936	18	8
6625-00-070-7998	7	2	5905-00-409-7616	9	6
6625-00-072-4577	14	4	5905-00-413-4407	18	6
6625-00-072-4578	15	1	5905-00-425-3700	4	28
5935-00-072-7157	1	6	5905-00-432-0133	3	23
5950-00-073-1218	4	11	5930-00-490-5174	15	8
5935-00-076-9704	18	12	5950-00-490-5175	9	32
5910-00-079-5672	3	37	5935-00-490-8259	3	15
6625-00-081-2824	18	25	5935-00-490-8260	4	15
5910-00-086-6946	5	13	5905-00-490-8374	18	17
5960-00-087-3086	3	33	5935-00-490-8617	4	16
5910-00-087-3522	5	16	5935-00-490-8617	9	24
5910-00-088-0328	5	36	5910-00-556-9437	4	6
5910-00-104-0706	4	39	5910-00-583-1255	5	18
5905-00-114-5428	3	27	5910-00-593-2515	4	19
5935-00-149-4066	13	1	5960-00-615-5584	3	14
6240-00-155-8706	17	44	5910-00-667-5757	11	2
5905-00-171-2005	3	21	5910-00-681-9204	12	4
5355-00-179-8677	18	2	5960-00-681-9596	3	20
6625-00-179-8678	2	8	5910-00-702-5718	9	23
5905-00-185-6946	3	18	5910-00-712-8192	9	34
5905-00-185-8510	9	35	5961-00-725-4075	5	15
5905-00-185-8518	3	39	5961-00-729-0129	9	3
5905-00-185-8518	10	16	5930-00-729-8445	4	36
5905-00-186-3008	12	17	5930-00-729-8445	18	14
5905-00-192-0390	4	32	5961-00-759-1312	5	3
5905-00-192-0660	3	11	5905-00-769-7223	4	12
5905-00-192-3987	3	26	5961-00-773-0108	7	13
5905-00-192-3987	7	9	5961-00-773-0108	8	12
5905-00-192-3987	8	8	4935-00-774-6255	13	3
5905-00-192-3987	9	14	5905-00-780-7571	5	34
5905-00-192-9260	3	13	5910-00-802-7432	8	4
5905-00-195-6761	4	1	5910-00-802-7432	10	13
5905-00-195-6806	4	2	5960-00-806-5614	4	21
5935-00-197-4319	8	7	5910-00-806-6418	3	29
5935-00-197-4331	6	4	5905-00-810-3546	11	1
5935-00-223-8709	6	1	5910-00-823-1476	5	19
5930-00-231-1491	18	23	5935-00-838-5183	1	4
5935-00-241-4005	4	42	5961-00-845-4593	7	4
5905-00-249-3661	4	20	5961-00-845-4595	10	12
5905-00-252-2995	5	31	5961-00-845-7632	10	2
5905-00-254-9201	4	45	5910-00-847-5583	3	17
5935-00-257-7058	6	3	5910-00-847-5583	4	24
5935-00-257-7185	3	28	5935-00-847-6803	4	5
5905-00-257-7513	5	9	5935-00-847-6803	9	2
5910-00-264-9427	9	28	5355-00-880-5153	18	3
5905-00-279-1692	5	38	5910-00-884-0256	4	49
5905-00-279-1754	3	34	5935-00-888-1439	12	18
5905-00-279-1884	3	12	5910-00-892-7466	4	4
5905-00-279-2514	3	6	5935-00-892-9035	4	30
5905-00-279-2621	5	26	5935-00-892-9035	6	2
5905-00-279-3495	4	13	5935-00-892-9035	7	3
5905-00-279-3496	9	10	5935-00-892-9035	8	2
5905-00-279-3504	14	3	5935-00-892-9035	11	3
5905-00-279-3517	9	37	5910-00-899-3797	3	3
5920-00-280-5062	5	6	5961-00-902-8820	8	3
5935-00-283-2897	4	31	6625-00-935-8109	1	1
5905-00-295-3410	9	19	5820-00-935-8114	2	6
5905-00-295-3410	12	15	6240-00-943-7560	18	4
5920-00-295-9600	5	8	5935-00-944-1009	3	7
5905-00-299-1541	9	4	5961-00-952-6721	5	14
5905-00-299-1965	7	6	5910-00-985-2103	5	42
5905-00-299-1965	8	5	5960-00-996-7077	3	8
5905-00-299-1965	10	15	5960-00-996-7077	4	17
5905-00-299-1965	11	15			

SECTION IV

NATIONAL STOCK NUMBER AND PART NUMBER INDEX

TM-11-6625-1559-24P

PART NUMBER	FSCM	FIGURE NO.	ITEM NO.	PART NUMBER	FSCM	FIGURE NO.	ITEM NO.
AA304-7	70417	17	58	RC20GF105K	81349	9	6
AA335-5	70417	15	12	RC20GF134J	81349	4	41
AFH1-04	00656	5	16	RC20GF151J	81349	9	4
AFH1-52	00656	5	17	RC20GF154K	81349	3	13
AFH2-40	00656	5	13	RC20GF155J	81349	3	34
AUA	79133	4	47	RC20GF184J	81349	3	11
BA811-1533	71590	3	23	RC20GF220K	81349	5	31
BBR12-150	00022	4	38	RC20GF224K	81349	5	21
BPD203	00656	9	22	RC20GF225J	81349	9	25
BR4-450	14655	5	36	RC20GF3R3J	81349	5	34
BWH10HMPORMLOPCT	75042	5	23	RC20GF301J	81349	7	6
CER70	13327	5	3	RC20GF301J	81349	8	5
CLU1031	44655	9	36	RC20GF301J	81349	10	15
CLU5031	44655	5	9	RC20GF301J	81349	11	15
CML5E121J	81349	9	33	RC20GF330K	81349	5	26
CML5E161J	81349	9	30	RC20GF335K	81349	3	12
CML5E300J	81349	9	28	RC20GF391J	81349	4	44
CS5013-1	97913	9	45	RC20GF394K	81349	3	27
C2 304	80089	5	5	RC20GF471K	81349	3	21
DA-505/U	80058	1	5	RC20GF472J	81349	14	3
DA-505/U	80058	7	2	RC20GF473J	81349	4	45
DD390	71590	9	23	RC20GF473K	81349	9	19
DD470	71590	9	8	RC20GF474K	81349	12	15
DM19-152J	72136	4	51	RC20GF474K	81349	3	18
DM20-182G	72136	4	48	RC20GF5R1J	81349	11	1
D6-202	71590	4	4	RC20GF510J	81349	1	2
EL1677	02459	5	40	RC20GF510J	81349	9	37
FA5C102W	01121	8	4	RC20GF513J	81349	9	10
FA5C102W	01121	7	11	RC20GF563J	81349	9	27
FA5C102W	01121	10	13	RC20GF564J	81349	3	6
FA5C4701	01121	7	5	RC20GF683J	81349	4	22
FA5C4701	01121	8	10	RC20GF753J	81349	5	30
FA5C4701	01121	10	14	RC20GF753J	81349	4	13
FF312	70417	16	18	RC32GD394J	81349	5	22
FRL10-300	24681	5	24	RC32GF100J	81349	5	38
FRL10-3000	24681	3	38	RC42GF152K	81349	4	37
FRL10-4000	24681	5	11	RC42GF222K	81349	3	36
FRL10-5000	24681	5	27	RC99GF101J	81349	10	11
FL26	71785	3	16	RC99GF101J	81349	17	2
F605	01766	9	29	RF231U	81349	2	6
GALLD	77342	3	30	RG55AU	81349	17	6
GALLD	77342	4	46	RN20B1060F	81349	4	27
GALLD	77342	5	37	RN20B3002F	81349	4	25
HC30	13327	5	15	RN20B3163F	81349	4	18
HFT65A	01113	10	7	RN25B1252F	81349	4	40
HFT65A	01113	12	3	RN25B6802F	81349	4	26
HMB	71400	5	7	RN25B8202F	81349	4	43
JA2N056F104AA	01121	18	19	RN70D1874F	81349	4	12
JG88U	80058	1	3	RN70D5101F	81349	4	21
JG88U	80058	13	1	SC593U	80058	1	1
J82182	01121	18	16	STCER72F	13327	5	32
K3A	92703	9	3	S0D30D	13327	5	14
LC026B7	84830	15	4	S1657-3140004	75376	18	24
LR8723	71450	18	17	S1676-33-40D	75376	18	5
MAC5	80583	12	4	S1677-3WSKIRT	01113	18	9
MP4S1	14655	5	39	S1777-313-160D	75376	18	15
MSM1470-2	97913	4	16	S304AB	71785	6	10
MSM1470-2	97913	9	24	S306AB	71785	6	4
NE2P	08806	18	4	S315EB	71785	6	3
PM4S1	14655	3	29	TCN20	71590	9	46
PRS1750	00656	5	18	TCN24	71590	9	18
P304CCT	71785	9	44	TC21	71590	9	9
306RP	71785	6	1	TCZ1R5	71590	9	11
P315AB	71585	4	42	TCZ3R3	71590	9	34
P8292ZN11	00656	4	3	TD1500-6	72699	5	12
P8292ZN11	00656	11	8	T110B63	73559	18	23
P8292ZN13	00658	3	3	T240	82879	1	4
RC20GF101K	81349	12	17	UG-1640/U	71785	1	7
RC20GF102J	81349	4	2	UG-657/U	80058	4	30
RC20GF102K	81349	3	4	UG-657/U	80058	6	2
RC20GF102K	81349	9	1	UG-657/U	80058	11	3
RC20GF103J	81349	9	35	UG-657U	80058	7	3
RC20GF103K	81349	3	39	UG-657U	80058	8	2
RC20GF103K	81349	10	16	UG909U	80058	9	40
RC20GF104J	81349	4	1	WP068	90201	18	13
RC20GF104K	81349	3	26	0A2 WA	80131	5	19
RC20GF104K	81349	5	20	04-703-02	91662	6	7
RC20GF104K	81349	7	9	04-703-02	91668	6	6
RC20GF104K	81349	8	8	0670-0014A0-102K	15450	7	14
RC20GF104K	81349	9	14	0670-0014A0-102K	15450	8	13
RC20GF105K	81349	4	32	099067	13327	5	33

SECTION IV

NATIONAL STOCK NUMBER AND PART NUMBER INDEX

TM11-6625-1559-24P

PART NUMBER	FSCM	FIG. NO.	ITEM NO.	PART NUMBER	FSCM	FIG. NO.	ITEM NO.
1-20DX7-321DX3-6	01113	17	32	216-258	01113	18	20
1-3-4 D48F17500	44655	5	10	2161	01113	12	10
1-4-2CX1-20H	01113	17	48	218-030	01113	17	37
1-4-28X3-8 SCHCO	01113	17	38	219-231	01113	17	49
1N87	80131	9	7	219-373	01113	18	21
1Z	84171	4	10	22-3	81073	12	18
10-32	01113	17	24	221-099	01113	17	10
10-32	01113	18	10	221-102	01113	17	19
10-32X1-2RH	01113	17	16	221-103	01113	17	5
10-32X1-2SS	01113	17	41	221-187	01113	17	52
10-32X1-4BH	01113	16	4	221-190	01113	17	61
10-32X3-16SCHCU	01113	17	42	221-192	01113	17	7
10-32X3-8	01113	17	36	221-197	01113	17	34
10-32X3-8PH	01113	18	26	221-198	01113	17	40
10-32X3-8SS	01113	17	43	221-218	01113	15	9
10-32X5-8FH	01113	18	22	222-115	01113	7	13
101T	01113	17	29	222-115	01113	8	12
100-5100	01113	17	47	222-116	01113	7	1
101	83330	8	7	222-117	01113	8	1
101	83330	7	8	222-146	01113	16	2
101B	02820	3	5	222-166	01113	7	10
101T	01113	16	9	222-166	01113	8	9
102	83330	18	12	224-014	01113	17	69
102B	02820	3	35	224-016	01113	12	14
104110-5	80625	17	53	226-019	01113	17	39
118-083	01113	3	9	226-020	01113	17	35
118-087	01113	3	19	226-024	01113	16	13
118-088	71450	5	28	226-026	01113	16	5
118-090	01113	3	10	228-130	01113	17	3
12A	82389	4	31	228-132	01113	17	26
12AT7	80131	3	14	228-133	01113	17	23
12AY7	80131	4	23	228-135	01113	17	59
128-204	01113	17	17	228-136	01113	15	6
130-106	01113	8	3	229-110	01113	17	55
13219	71785	3	31	23S125-0250	78515	17	50
13220	71785	6	9	23S125-0375	78515	17	54
139-106	01113	7	4	231-142	01113	15	10
139-107	01113	10	2	232-073	01113	17	57
139-111	01113	10	12	232-088	01113	18	3
141-192	01113	5	2	233-007	01113	15	5
1505-102	83330	5	25	234-156	01113	4	29
156-089	01113	12	6	234-157	01113	4	14
156-457	01113	9	38	234-158	01113	4	8
156-458	01113	9	48	237-003	01113	18	2
156-459	01113	9	31	238-146	01113	17	9
156-460	01113	9	12	239-067	01113	18	8
156-461	01113	9	39	24OELR05	56289	5	4
156-749	01113	14	4	256X3-16RH	01113	17	65
16 0F10492	56289	5	42	261-12-06-030	71785	13	2
160P224 94	56289	5	35	265 BLACK	80813	18	7
160P47304	56289	3	17	2675	71785	3	25
160047304	56289	4	20	2675	71785	6	5
161-124	01113	15	8	273-017	01113	17	25
171-207	01113	18	25	2770K	71785	6	8
181-271	01113	3	15	278-019	01113	17	56
182-602	01131	4	15	278-022	01113	16	22
192P10402	56289	4	33	278-024	01113	16	17
2-56X1-4RH	01113	11	10	278-025	01113	16	6
2-56X3-16RH	01113	11	7	278-027	01113	16	7
2-56X3-16RH	01113	17	11	278-028	01113	16	11
2-56X9-16RH	01113	10	5	278-029	01113	16	14
2AU	97913	4	35	3-48SST	01113	17	33
2AU	97913	9	21	3-8-32	01113	17	64
2FXGLK	12697	4	28	3AUA	97913	3	22
2HA	97913	9	47	3AUA	97913	10	17
2HAA	01113	9	49	3IT	01113	17	22
2IT	01113	11	11	301-00CCOK0688L	15450	9	16
2TMS20	56289	4	39	312002	75915	5	6
203	83330	3	28	313-100	75915	5	8
21 8094-0250	78515	16	16	316-63	73559	4	36
211-163	01113	3	24	316-63	73559	18	14
211-169	01113	5	44	316-63	73559	5	29
211-218	01113	15	9	331-00CCOH0759D	72982	3	32
212-329	01113	15	13	33100CCOK0159C	72982	12	5
212-370	01113	17	1	350LFP	82389	4	5
213-333	01113	15	3	350LFP	82389	9	2
214-289	01113	17	15	370FA	72982	12	16
214-298	01113	18	1	4-40X5-16TRUSS-H	01113	8	6
214-328	01113	16	8	4-40X1-2RH	01113	11	12
215-101	01113	10	8	4-40X1-4FILH	01113	17	12

SECTION IV

NATIONAL STOCK NUMBER AND PART NUMBER INDEX

TM11-6225-1559-24P

PART NUMBER	FSCM	FIG. NO.	ITEM NO.	PART NUMBER	FSCM	FIG. NO.	ITEM NO.
4-40X1-4RH	01113	17	8	701-003	01113	15	7
4-40X1-4RHS	01113	15	2	701-033	01113	17	18
4-40X3-16	01113	17	27	7308	73445	4	9
4-40X3-16RHS	01113	15	14	752-009	01113	10	6
4-40X3-4	01113	17	14	754-005-1	01113	17	63
4-40X3-4FILH	01113	17	13	8-32	01113	10	10
4-40X3-4RH	01113	12	9	8-32X3-16SSSCHCU	01113	16	15
4-40X3-8FIL	01113	7	7	8-32X3-8BH	01113	16	19
4-40X5-16SCHFP	01113	17	66	8-32X5-16SSS	01113	15	11
4TMS20	56289	3	37	810-247	01113	8	1
4X3-16HH	01113	11	5	810-316	01113	12	2
4X3-8BHSTL	01113	11	9	810-658	01113	5	1
45-2551	71450	18	18	810-660	01113	3	1
464	72136	4	6	811	15450	9	15
466	72136	4	49	811-120	01113	12	1
469	72136	4	19	811-121	01113	12	8
47	08108	17	44	811-122	01113	12	11
4700CB	72982	11	2	811-123	01113	10	1
502-8136-2132-80	72619	17	45	811-236	01113	17	28
5133-25	01113	16	21	811-239	01113	15	1
536-000-4R	15450	9	5	811-244	01113	9	13
536-000-4R	15450	10	9	811-245	01113	9	32
536-000-4R	15450	11	4	811-250	01113	15	15
536-000-4R	72982	10	4	811-253	01113	16	20
5675	81349	12	12	811-258	01113	16	12
6-32X1-4BH	01113	16	10	811-259	01113	16	1
6-32X1-4BH	01113	17	20	811-263	01113	17	4
6-32X1-4PH	01113	11	14	811-264	01113	17	67
6-32X3-16	01113	7	12	811-277	01113	17	46
6-32X3-16	01113	8	11	811-281	01113	17	50
6-32X3-16BH	01113	17	68	811-402	01113	4	24
6-32X3-16SCHCUP	01113	17	62	811-519	01113	18	11
6-32X3-4SS	01113	17	30	815-107	01113	14	1
6-32X3-8PH	01113	10	3	815-124	01113	2	9
6-32X3-8PHSTL	01113	12	13	818-107	01113	18	6
6-32X5-8BH	01113	17	51	822-004	01113	13	3
6AU6	80131	3	8	822-052	01113	1	6
6AU6	80131	4	17	822-128	01113	2	10
6CW5	80131	3	33	822-131	01113	2	8
				822-133	01113	2	5
6IT	01113	11	13	822-134	01113	2	7
6IT	01113	16	3	822-136	01113	2	4
6IT	01113	17	31	822-137	01113	2	1
6P321	83325	5	43	822-139	01113	2	3
6TMS60	56289	5	41	822-140	01113	2	2
6X1-4HH	01113	11	6	823-018	01113	12	7
61-4AH	97913	9	26	823-018	01113	14	2
6922	80131	9	42	823-018	01113	17	21
6922	80131	3	20	823-021	01113	4	11
69-3103	03801	9	41	9714	72825	4	7
7H5AH	97913	3	2	9714	72825	9	17

LATEST NATIONAL STOCK NUMBER ASSIGNMENTS

STOCK NUMBER	FIG. NO.	ITEM NO.	STOCK NUMBER	FIG. NO.	ITEM NO.
5950-00-022-5875	9	48	5905-00-279-1890	4	44
5950-00-022-5898	9	39	5905-00-279-2529	3	36
5910-00-063-0543	9	11	5905-00-279-2657	19	6
5915-00-070-7997	14	2	5905-00-279-3495	5	30
5915-00-070-7997	17	21	5905-00-435-6561	19	8
6625-00-072-4583	19	14	5910-00-437-7645	4	33
5910-00-088-1236	4	51	5905-00-490-8373	19	3
5905-00-110-0196	3	4	5935-00-500-6174	6	10
5905-00-110-0196	9	1	5910-00-543-0052	9	46
5905-00-111-4739	19	10	5935-00-642-4238	19	13
5905-00-111-4744	19	9	5935-00-642-4238	19	15
5905-00-111-4840	4	34	5910-00-666-7615	19	4
5905-00-114-5393	5	21	5960-00-676-9016	9	42
5905-00-114-5438	1	2	5930-00-729-8445	5	29
5905-00-114-5456	19	7	5910-00-729-8830	4	38
5935-00-133-0395	5	25	5910-00-763-9089	5	23
5905-00-141-1187	10	11	5910-00-780-8526	10	4
5935-00-149-4066	1	3	5910-00-802-7432	7	11
5935-00-173-7277	1	7	5910-00-822-8214	9	8
5960-00-188-0933	4	9	5910-00-825-3252	19	5
5905-00-192-3987	5	20	5910-00-829-6957	11	8
5905-00-195-5516	4	37	1560-00-835-1444	19	16
5935-00-197-4319	7	8	5910-00-845-9937	5	12
5935-00-222-9828	4	7	5935-00-850-8876	18	13
5935-00-222-9828	9	17	5920-00-861-6082	5	7
5935-00-242-5283	9	44	5910-00-879-6957	4	3
5935-00-242-5283	19	1	5935-00-892-9035	9	40
5905-00-247-8730	5	22	5360-00-948-7268	15	4
5905-00-249-9468	4	41	5910-00-984-7787	9	33
5905-00-249-9468	19	11	5910-00-984-8669	9	30

SECTION IV

NATIONAL STOCK NUMBER AND PART NUMBER INDEX

TM11-6625-1559-24P

ADDITIONAL LATEST NATIONAL STOCK NUMBER ASSIGNMENTS

STOCK NUMBER	FIG NO.	ITEM NO.
5955-00-043-1346	9	29
5960-00-188-3899	12	12
5905-00-190-8835	9	25
5910-00-270-4852	12	16
5935-00-496-5927	9	45
5960-00-503-4880	6	7
5910-00-804-2379	9	20
5910-00-814-7179	5	35
5960-00-822-9222	9	43
5961-00-943-9407	4	50

PART NUMBER	FSCM	FIG. NO.	NO.
CML5C151G03	81349	9	20
JAN2N3250A	81349	4	50
6CB6A	80131	9	43

★ U.S. GOVERNMENT PRINTING OFFICE: 1977—703-025:108

RECOMMENDED CHANGES TO EQUIPMENT TECHNICAL MANUALS



SOMETHING WRONG WITH THIS MANUAL?

THEN... JOT DOWN THE DOPE ABOUT IT ON THIS FORM, TEAR IT OUT, FOLD IT AND DROP IT IN THE MAIL!

FROM: (YOUR UNIT'S COMPLETE ADDRESS)

Commander
Stateside Army Depot
ATTN: AMSTA-US
Stateside, N.J. 07703

DATE 10 July 1975

PUBLICATION NUMBER

TM 11-5840-340-12

DATE

23 Jan 74

TITLE

Radar Set AN/APG-76

BE EXACT... PIN-POINT WHERE IT IS

PAGE NO.	PARA-GRAPH	FIGURE NO.	TABLE NO.
2-25	2-28		
3-10	3-3		3-1
5-6	5-8		
		F03	

IN THIS SPACE TELL WHAT IS WRONG AND WHAT SHOULD BE DONE ABOUT IT:

Recommend that the installation antenna alignment procedure be changed throughout to specify a 2° IFF antenna lag rather than 1°.

REASON: Experience has shown that with only a 1° lag, the antenna servo system is too sensitive to wind gusting in excess of 25 knots, and has a tendency to rapidly accelerate and decelerate as it hunts, causing strain to the drive train. Hunting is minimized by adjusting the lag to 2° without degradation of operation.

Item 5, Function column. Change "2 db" to "3db."

REASON: The adjustment procedure for the TRANS POWER FAULT indicator calls for a 3 db (500 watts) adjustment to light the TRANS POWER FAULT indicator.

Add new step f.1 to read, "Replace cover plate removed in step e.1, above."

REASON: To replace the cover plate.

Zone C 3. On J1-2, change "+24 VDC to "+5 VDC."

REASON: This is the output line of the 5 VDC power supply. + 24 VDC is the input voltage.

TYPED NAME, GRADE OR TITLE, AND TELEPHONE NUMBER

SSG I. M. DeSpirito 999-1776

SIGN HERE:

SSG I. M. DeSpirito

DA FORM 2028-2 (TEST) 1 AUG 74

P.S.--IF YOUR OUTFIT WANTS TO KNOW ABOUT YOUR MANUAL "FIND," MAKE A CARBON COPY OF THIS AND GIVE IT TO YOUR HEADQUARTERS.

HISA 1686-75

TEAR ALONG DOTTED LINE

RECOMMENDED CHANGES TO EQUIPMENT TECHNICAL MANUALS



SOMETHING WRONG WITH THIS MANUAL?

THEN . . . JOT DOWN THE DOPE ABOUT IT ON THIS FORM, TEAR IT OUT, FOLD IT AND DROP IT IN THE MAIL!

FROM: (YOUR UNIT'S COMPLETE ADDRESS)

DATE

PUBLICATION NUMBER

DATE

TITLE

BE EXACT. . . PIN-POINT WHERE IT IS

IN THIS SPACE TELL WHAT IS WRONG AND WHAT SHOULD BE DONE ABOUT IT:

PAGE NO.

PARA-GRAPH

FIGURE NO.

TABLE NO.

TEAR ALONG DOTTED LINE

TYPED NAME, GRADE OR TITLE, AND TELEPHONE NUMBER

SIGN HERE:

FILL IN YOUR
UNIT'S ADDRESS

FOLD BACK

DEPARTMENT OF THE ARMY

OFFICIAL BUSINESS

PENALTY FOR PRIVATE USE, \$300

POSTAGE AND FEES PAID
DEPARTMENT OF THE ARMY
DOD-314



Commander
US Army Electronics Command
ATTN: DRSEL-MA-Q
Fort Monmouth, New Jersey 07703

TEAR ALONG DOTTED LINE

FOLD BACK

RECOMMENDED CHANGES TO EQUIPMENT TECHNICAL MANUALS



THEN... JOT DOWN THE DOPE ABOUT IT ON THIS FORM, TEAR IT OUT, FOLD IT AND DROP IT IN THE MAIL!

SOMETHING WRONG WITH THIS MANUAL?

FROM: (YOUR UNIT'S COMPLETE ADDRESS)

DATE

PUBLICATION NUMBER DATE TITLE

BE EXACT. . . PIN-POINT WHERE IT IS				IN THIS SPACE TELL WHAT IS WRONG AND WHAT SHOULD BE DONE ABOUT IT:
PAGE NO.	PARA-GRAPH	FIGURE NO.	TABLE NO.	

TEAR ALONG DOTTED LINE

TYPED NAME, GRADE OR TITLE, AND TELEPHONE NUMBER SIGN HERE:

FILL IN YOUR
UNIT'S ADDRESS

FOLD BACK

DEPARTMENT OF THE ARMY

OFFICIAL BUSINESS

PENALTY FOR PRIVATE USE, \$300

POSTAGE AND FEES PAID
DEPARTMENT OF THE ARMY
DOD-314



Commander
US Army Electronics Command
ATTN: DRSEL-MA-Q
Fort Monmouth, New Jersey 07703

TEAR ALONG DOTTED LINE

FOLD BACK

RECOMMENDED CHANGES TO EQUIPMENT TECHNICAL MANUALS



SOMETHING WRONG WITH THIS MANUAL?

THEN... JOT DOWN THE DOPE ABOUT IT ON THIS FORM, TEAR IT OUT, FOLD IT AND DROP IT IN THE MAIL!

FROM: (YOUR UNIT'S COMPLETE ADDRESS)

DATE

PUBLICATION NUMBER

DATE

TITLE

BE EXACT... PIN-POINT WHERE IT IS

IN THIS SPACE TELL WHAT IS WRONG AND WHAT SHOULD BE DONE ABOUT IT:

PAGE NO.	PARA-GRAPH	FIGURE NO.	TABLE NO.
----------	------------	------------	-----------

TEAR ALONG DOTTED LINE

TYPED NAME, GRADE OR TITLE, AND TELEPHONE NUMBER

SIGN HERE:

DA FORM 2028-2 (TEST)
1 AUG 74

P.S.--IF YOUR OUTFIT WANTS TO KNOW ABOUT YOUR MANUAL "FIND," MAKE A CARBON COPY OF THIS AND GIVE IT TO YOUR HEADQUARTERS.

FILL IN YOUR
UNIT'S ADDRESS

FOLD BACK

DEPARTMENT OF THE ARMY

OFFICIAL BUSINESS

PENALTY FOR PRIVATE USE, \$300

POSTAGE AND FEES PAID
DEPARTMENT OF THE ARMY
DOD-314



Commander
US Army Electronics Command
ATTN: DRSEL-MA-Q
Fort Monmouth, New Jersey 07703

TEAR ALONG DOTTED LINE

FOLD BACK

By Order of the Secretary of the Army:

BERNARD W. ROGERS
General, United States Army
Chief of Staff

Official:

PAUL T. SMITH
Major General, United States Army
The Adjutant General

DISTRIBUTION

Active Army:

USASA(2)
COE(3)⁽³⁾
TSG(1)⁽¹⁾
USAARENBD(1)
DARCOM(1)
TRADOC(2)
OSMajComd(4)⁽⁴⁾
LOGCOMDS(3)
MICOM(2)
TECOM(2)⁽²⁾
USACC(4)
MDW(1)⁽¹⁾
Armies(2)
Corps(2)⁽²⁾
HISA (Ft Monmouth)(33)
Svc Colleges(1)
USASIGS(5)
USAADS(2)
USAFAS(2)⁽²⁾
USAIS(2)⁽²⁾
USAES(2)
USAICS(3)

MAAG(1)
USARMIS(1)
Installations(2) except
 Fort Carson(5)
 Fort Gillem(10)
 Fort Gordon(10)
 Fort Huachuca(10)
 Ft Richardson(ECOMOfc)(2)
 LBAD(14)
 SAAD(30)
 TOAD(14)⁽¹⁴⁾
 SHAD(3)
SigFLDMS(1)
USAERDAA(1)
USAERDAW(1)
Units org under folTOE:(1)
 11-95
 11-215
 11-500(AA-AC)
 29-27
 29-134
 29-136

NG: None

USAR: None

For explanation of abbreviations used see, AR310-50

DEPARTMENT OF THE ARMY
US ARMY AG PUBLICATIONS CENTER
1655 WOODSON ROAD
ST. LOUIS, MISSOURI 63114

OFFICIAL BUSINESS
PENALTY FOR PRIVATE USE \$300

POSTAGE AND FEES PAID
DEPARTMENT OF THE ARMY
ODD 314

